

JMA-5362-8R Bird Radar

JRC



Best solution for commercial fishing boats in long range detection and tracking of the flocks of seabirds.



60kW high-power antenna

Optimized for bird detection and tracking

19" highly visible LCD screen

Constaview™ digital signal processing

TEF™ multi-level target enhancement



JMA-5362-8R Bird Radar

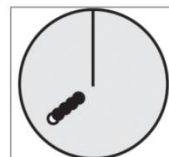
JRC introduces the best solution for commercial fishing boats in long range detection and tracking of the flocks of seabirds.



Constaview™

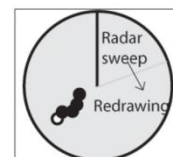
The second generation and patented Constaview™ is realized through the use of three high-speed processors (in-house Tornado™ technology). All info gathered by the radar is fully processed within a few milliseconds before displayed, generating a smooth image rotation when sailing in Head-Up mode. When changing to North-Up, the new radar image is displayed without any delay caused by the scanner rotation.

Real time Head-Up mode
Constaview™



True Trails
Constaview™ refreshes the image every 16mS. Despite heading changes trails are always true.

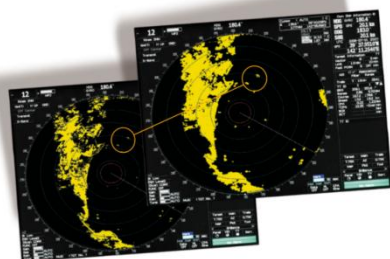
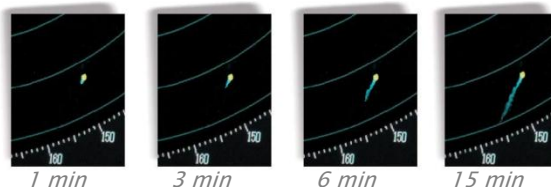
Conventional



Relative Trails
Traditional technology relies on several sweeps of the scanner to redraw the image. Trails are presented as relative.

Select a trail length

Other ship's movement and speed can be monitored from length and direction of their trails, primary serving for collision avoidance. The JMA-5362-8R integrates different trail length modes (15sec/30sec/1min/3min/6min/10min/15min/30min/60min/continuous) that will show ship's course instantly – unique operational feature that allows for more flexibility.



Target Enhancement Function™ (TEF)

TEF™ allows target enhancement relative to the target size. The smaller echoes are far more enlarged than bigger echoes, giving a better on-screen separation and identification.

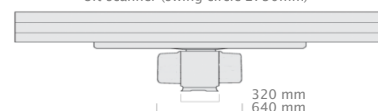
Specification

Model	JMA-5362-8R
Display	Color raster scan
Screen	19" color LCD (SXGA)
Effective diameter	More than 250mm
Range scale (NM)	0.125, 0.25, 0.5, 0.75, 1.5, 3, 6, 12, 24, 48, 96
Bearing indication	North-up/Course-up/Head-up
Peak power	60kW
Frequency	3050 MHz ± 25MHz (S-band)
Antenna revolution	17/14 rpm
Power supply	24VDC (display) / 220VAC (antenna)

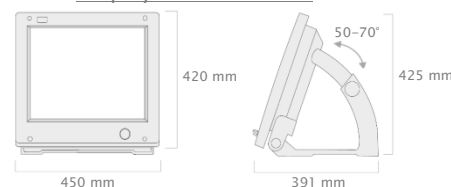
All specifications are subject to change without notice.

Antenna unit: NKE-3710-8

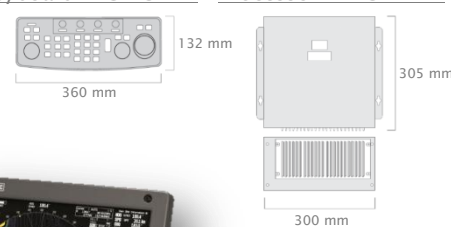
8ft scanner (swing circle 2730mm)



Display unit: NWZ-173



Keyboard: NCE-5171 Processor: NDC-1417



For further info please contact:

JRC America (HQ)

1011 SW Klickitat Way, 201B
Seattle, WA 98134
USA

P 1 206 654 5644
F 1 206 654 7030
E sales@jrcamerica.com
W www.jrcamerica.com

JRC America (NY branch)

2125 Center Avenue Suite 208
Fort Lee, NJ 07024
USA

P 1 201 242 1882
F 1 201 242 1885
W www.jrcamerica.com

