

RUGGED.

DOCKING STATIONS AND VEHICLE MOUNTS



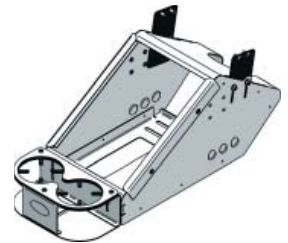
In-Dash Mounting Kit for the Ergonomic Console Box

Placement	Weight	Height	Width	Depth
Attaches to pre-drilled holes on each side of the <i>Ergonomic Console Box</i> (Item No. MCS-ERGOBOX12)	0.75 lbs	NA	NA	NA

Features

- Heavy gauge steel construction for long-term durability
- Black powdercoat finish for maximum corrosion resistance
- Enables the *Ergonomic Console Box* (Item No. MCS-ERGOBOX12) to be mounted with any *In-Dash Computer Mounting System* for Ford Crown Victoria (example: NP-PDRC-IND4, 7160-0092 or 7160-0074)

Item No. NP-DASH-KT



3001 Borham Ave
Stevens Point, WI 54481
Phone: 800-456-6868
Fax: 715-344-8845

Email: gamberj@gamberjohnson.com
Website: www.gamberjohnson.com