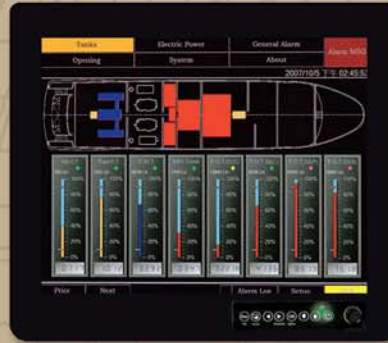


ComNav[®]



Daylight Viewable LCDs C SERIES

Display Technology Engineered for Superior Performance

- 12", 15", 19" and 23" models
- DNV Type approved for maritime applications
- Superior thermal channel design runs cooler than standard monitors (with built-in auto heater for extreme cold weather)
- IMO compliant hyper dimming — knob controls backlight brightness from 0% to 100%
- OSD user control — provides user friendly front panel access
- 800 nit brightness daylight viewable — crystal clear enhanced visibility using advanced technology
- Optical bonding LCD technology reduces reflection
- Touchscreen options with anti-glare protective glass
- Multi scan function — accepts multi-video inputs, DVI, VGA, S-Video and supports Picture In Picture (PIP) function
- Marine grade corrosion resistant connectors
- IP65 rated waterproof design
- Universal flush or pedestal mounting
- Shock & vibration proof to rugged military specifications
- Wide angle viewing
- Supports 12-36 VDC or 110/240 VAC power supply
- CE, FCC certified, IEC 60945 and RoHs compliant
- Worldwide service — 1 year warranty

TFT Characteristics:

Resolution:	12"	1024 x 768
	15"	1024 x 768
	19"	1280 x 1024
	23"	1600 x 1200
Pixel Pitch(RGB):	0.24 (H) x 0.24 (V) mm	
Contrast Ratio:	1200:1 Max	
Light Intensity:	2400 cd/m (typ.)	
Viewable Angles:	120(H);100(V)	

Input Signals:

RGB Signal:	D-SUB 15P connector (female)
Composite Video:	RCA phono plug
S-Video Signal:	S-Video (SVHS) plug
DVI-D Signal:	DVI-D input 24pin connector
DC Power Signal:	Screw terminal block
AC Power Signal:	Std IEC Inlet
Touch Screen (Optional):	D-SUB 9P connector (female)
Remote via RS-232:	D-SUB 9P connector (female)

Power Specifications:

Power Supply:	12 to 36 V DC power supply with Terminal block or 110/240 VAC power supply — adapter included
----------------------	---

Mechanical and Environmental:

Mechanical Mounting:	Panel (Flush) mount with IP65*,
Operating Temperature:	-20° to 60°C
Operating Humidity:	5% to 95% (non condensing)
Anti-Vibration:	5Hz~500Hz / 1G / 3 Axis
Anti-Shock:	15G, 11ms duration

* SAW touch for IP54

Certificate & Approvals:

DNV Type approved, CE, FCC certified, RoHs,
IEC 60945 compliant



Dimming



PIP



IP65 proof



OSD front panel



AR safety glass



Anti-corrosion



Touch screen



Wide Voltage application

Mechanical Dimensions:

		Width	Height	Depth
C12	12"	13.3"	11.5"	2.8"
C15	15"	16.2"	13.6"	3.1"
C19	19"	19.0"	17.5"	3.0"
C23	23"	23.0"	21.0"	4.5"

User Controls:

- Power On/Off via front buttons
- Variable brightness knob control
- Power mode status LED
- On screen display control (OSD)
- OSD remote control via RS-232

Available Options:

Touch Screen:	SAW, 5 Wire resistive
AR Safety Glass:	3mm anti-reflective protective glass
Bracket Mounting:	VESA Mount Bracket
	Swivel "U" bracket for horizontal or vertical bulkhead mount

ComNav®



ComNav Marine Ltd.
#15-13511 Crestwood Place,
Richmond, British Columbia • Canada • V6V 2G1
Phone: 604-207-1600 • Fax: 604-207-8008
E-mail: sales@comnav.com

www.comnav.com

Worldwide Service

Printed in Canada

Represented by:

Specifications subject to change without notice