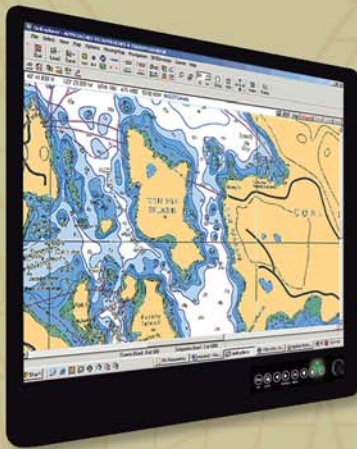


ComNav[®]



Sunlight Readable LCDs LED Backlit Displays CS SERIES

Advanced Technology Engineered for Superior Performance

- 12", 15" and 19" models
- White luminescence LED backlit monitors are super bright for increased reliability and long life
- Superior thermal channel design runs cooler than standard monitors (with built-in auto heater for extreme cold weather)
- Hyper Dimming — knob controls backlight brightness from 0% to 100%
- OSD user control — provides user friendly front panel access
- 1400 nit brightness sunlight viewable — crystal clear enhanced visibility using advanced technology
- Optical bonding LCD technology reduces reflection
- Touchscreen options with anti-glare protective glass
- Multi scan function — accepts multi-video inputs, DVI, VGA, S-Video and supports Picture In Picture (PIP) function
- Marine grade corrosion resistant connectors
- IP65 rated waterproof design
- Universal flush or pedestal mounting
- Shock & vibration proof to rugged military specifications
- Wide angle viewing
- Supports 12-36 VDC or 110/240 VAC power supply
- CE, FCC certified, IEC 60945 and RoHS compliant
- 1 year warranty
- Worldwide service

TFT Characteristics:

Resolution:	12"	800 x 600
	15"	1024 x 768
	19"	1280 x 1024
Pixel Pitch(RGB):	0.24 (H) x 0.24 (V) mm	
Contrast Ratio:	1200:1 Max	
Light Intensity:	2400 cd/m (typ.)	
Viewable Angles:	120(H);100(V)	

Input Signals:

RGB Signal:	D-SUB 15P connector (female)
Composite Video:	RCA phono plug
S-Video Signal:	S-Video (SVHS) plug
DVI-D Signal:	DVI-D input 24pin connector
DC Power Signal:	Screw terminal block
AC Power Signal:	Std IEC Inlet
Touch Screen (Optional):	D-SUB 9P connector (female)
Remote via RS-232:	D-SUB 9P connector (female)

Power Specifications:

Power Supply:	12 to 36 V DC power supply with Terminal block or 110/240 VAC power supply — adapter included
----------------------	---

Mechanical and Environmental:

Mechanical Mounting:	Panel (Flush) mount with IP65*,
Operating Temperature:	-20° to 60°C
Operating Humidity:	5% to 95% (non condensing)
Anti-Vibration:	5Hz~500Hz / 1G / 3 Axis
Anti-Shock:	15G, 11ms duration

* SAW touch for IP54

Certificate & Approvals:

CE, FCC certified, RoHS, IEC 60945 compliant



Dimming



PIP



IP65 proof



OSD front panel



AR safety glass



Anti-corrosion



Touch screen



Wide Voltage application

Mechanical Dimensions:

		Width	Height	Depth
C12S	12"	12.3"	10.7"	3.1"
C15S	15"	14.7"	12.5"	3.0"
C19S	19"	17.7"	15.4"	3.2"

User Controls:

- Power On/Off via front buttons
- Variable brightness knob control
- Power mode status LED
- On screen display control (OSD)
- OSD remote control via RS-232

Available Options:

Touch Screen:	SAW, 5 wire resistive
AR Safety Glass:	3mm anti-reflective protective glass
Bracket Mounting:	VESA Mount Bracket Swivel "U" bracket for horizontal or vertical bulkhead mount



ComNav®



ComNav Marine Ltd.
 #15-13511 Crestwood Place,
 Richmond, British Columbia • Canada • V6V 2G1
 Phone: 604-207-1600 • Fax: 604-207-8008
 E-mail: sales@comnav.com

www.comnav.com

Worldwide Service

Printed in Canada

Represented by:

Specifications subject to change without notice