

A | S E R I E S

Raymarine®



▲ A50/A50d

▲ A57d

▲ A70/A70d



## A | S E R I E S

Step up to A-Series and harness the power of Raymarine's advanced engineering and exclusive technologies.



## A50 & A50D

5" Chartplotter and Chartplotter/Fishfinder



A50



A50D

## A57D

5.7" Chartplotter/Fishfinder



A57D

## POWERFUL CHARTPLOTTER

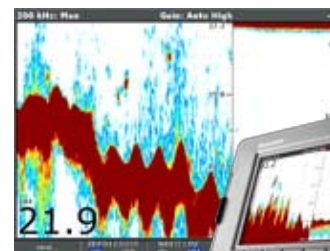


A-Series chartplotters are available pre-loaded with ready-to-navigate Navionics charts of the coastal U.S. or inland lakes and rivers. Step up to even greater chart detail and features with optional Navionics chart cards.

- 3D and satellite photo chart navigation using optional Navionics Platinum and HotMaps Platinum chart cards
- Support for Navionics Gold+ charts with high resolution 2D bathymetric charts for fishing



## UNMATCHED HD DIGITAL FISHFINDER



A-Series chartplotter/fishfinders offer superior fish detection and bottom discrimination using Raymarine's unmatched HD Digital sonar technology. The HD Digital fishfinder built into the A50D, A57D and A70D instantly adapts to changing seabed and water conditions providing fully automatic "hands off" operation.

- HD Digital technology eliminates unwanted noise and brings the entire water column into clear focus
- Powerful 500 watt transmitter
- Auto Adaptive control of sensitivity, ping rate, and transmit power

**HD DIGITAL**



## A70

6.4" Chartplotter and Chartplotter/Fishfinder



A70

A70o

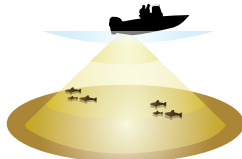
## ULTRA WIDE FANBEAM TRANSDUCER OPTION

Engineered for shallow water coastal, lake and river fishing, the unique FanBeam transducer delivers an extra wide view of the bottom. In addition to a very wide beam the FanBeam can be rotated fore and aft or port and starboard with an easy-to-use rotary beam control built right into the top of the transducer housing. The FanBeam transducer is designed for transom or trolling motor mounting and features a built in temperature sensor.

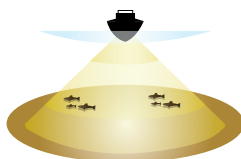
- 3 times the beam width of conventional 200 kHz transducers
- Unique beam rotation control built into the transducer housing
- 200 kHz frequency for fishing up to 300 feet of water
- Elliptical wide beam is 38° x 12° degrees wide at -3dB (maximum measured power)
- The FanBeam transducer is supplied standard with the A50D and A57D Inland models and is available as an option for all other models



FanBeam rotation control.  
Direct the beam fore  
and aft or port and  
starboard



Beam rotated fore and aft



Beam rotated port and starboard

Airmar Patent Pending

## SIRIUS MARINE WEATHER AND RADIO



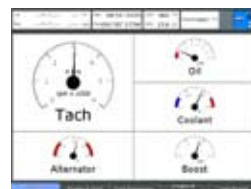
Graphical marine weather forecast via satellite plus over 130 channels of satellite radio entertainment using the optional SR50 receiver.



Optional SR50 receiver & antenna



## VIRTUAL ENGINE INSTRUMENTS



Integrate with NMEA2000 compatible engines and trim tabs.

## AUTOPILOT CONTROL



Activate and control Raymarine X-Series autopilots directly from the chartplotter interface.

## AIS (AUTOMATIC IDENTIFICATION SYSTEM) TARGET TRACKING.



Monitor other vessel positions with the optional AIS250 receiver.

## DSC POSITION POLLING



Locate your friends on the chart using VHF Digital Selective Calling.

## SEATALK<sup>ng</sup> AND NMEA2000.



Connect to the next generation onboard data networks as well as NMEA 0183 devices.

# A | S E R I E S



Navigate like a pro using high resolution 2D, 3D and aerial photo charts and target fish with unprecedented clarity using Raymarine's unmatched HD Digital sonar technology.

## A-SERIES MODEL LINE UP



A50

A50b

A57b

A70

A70b

	A50	A50b	A57b	A70	A70b
Display Size	5"	5"	5.7"	6.4"	6.4"
GPS/Chartplotter	•	•	•	•	•
Digital Fishfinder		•	•		•

# A | S | E | R | I | E | S

## ORDERING INFORMATION

### A-SERIES CHARTPLOTTERS

Description	Part number
A50 5" Chartplotter (no preloaded charts)	E62184
A50 5" Chartplotter with U.S. Coastal charts	E62184-US
A70 6.4" Chartplotter (no preloaded charts)	E62190
A70 6.4" Chartplotter with U.S. Coastal charts	E62190-US

### A-SERIES CHARTPLOTTER/FISHFINDER COMBOS

Includes a dual frequency 200/50 kHz transom transducer with depth, speed and temperature sensors

Description	Part number
A50D 5" Chartplotter/Fishfinder (no preloaded charts)	E62186
A50D 5" Chartplotter/Fishfinder with U.S. Coastal charts	E62186-US
A57D 5.7" Chartplotter/Fishfinder (no preloaded charts)	E62188
A57D 5.7" Chartplotter/Fishfinder with U.S. Coastal charts	E62188-US
A70D 6.4" Chartplotter/Fishfinder (no preloaded charts)	E62192
A70D 6.4" Chartplotter/Fishfinder with U.S. Coastal charts	E62192-US

### A-SERIES INLAND CHARTPLOTTER/FISHFINDER COMBOS

Includes a wide beam 200 kHz transom transducer with depth and temperature sensors

Description	Part number
A50D 5" Chartplotter/Fishfinder with U.S. Inland Lakes and Rivers	E62186-IN
A57D 5.7" Chartplotter/Fishfinder with U.S. Inland Lakes and Rivers	E62188-IN

2 year limited warranty

Lifestyle photography courtesy of Genmar

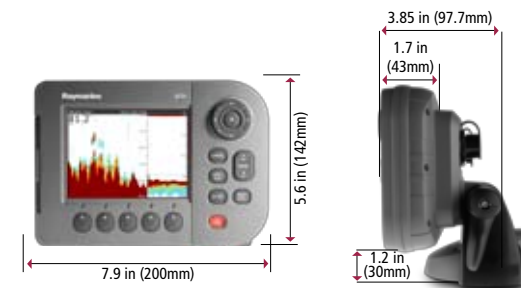
# Raymarine®

LIT82257

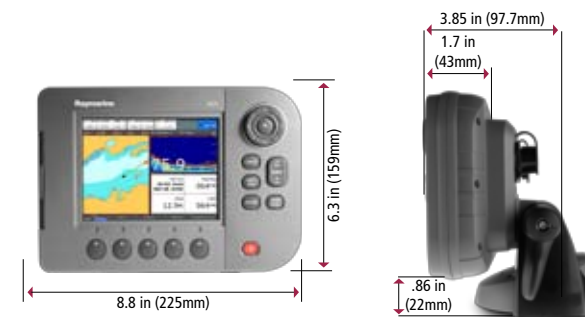
Raymarine Inc  
21 Manchester Street  
Merrimack, NH 03054  
USA  
Tel: 603.881.5200  
Fax: 603.864.4756  
[www.raymarine.com](http://www.raymarine.com)

Raymarine plc  
Anchorage Park  
Portsmouth, Hampshire PO3 5TD  
United Kingdom  
Tel: +44 (0)23 9269 3611  
Fax: +44 (0)23 9269 4642  
[www.raymarine.com](http://www.raymarine.com)

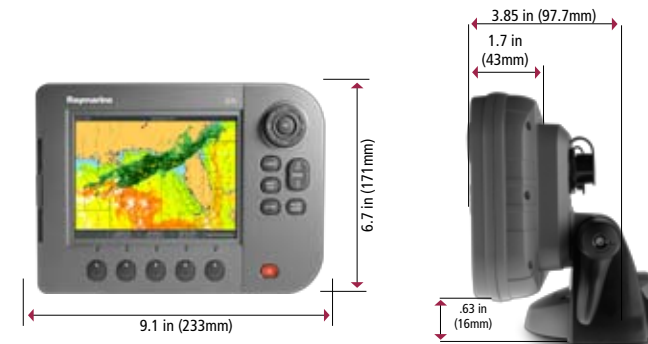
## A50/A50D DIMENSIONS



## A57D DIMENSIONS



## A70/A70D DIMENSIONS



Additional information, specifications and interactive product tours available online at [www.raymarine.com](http://www.raymarine.com)

Product specifications subject to change without notice



09/08