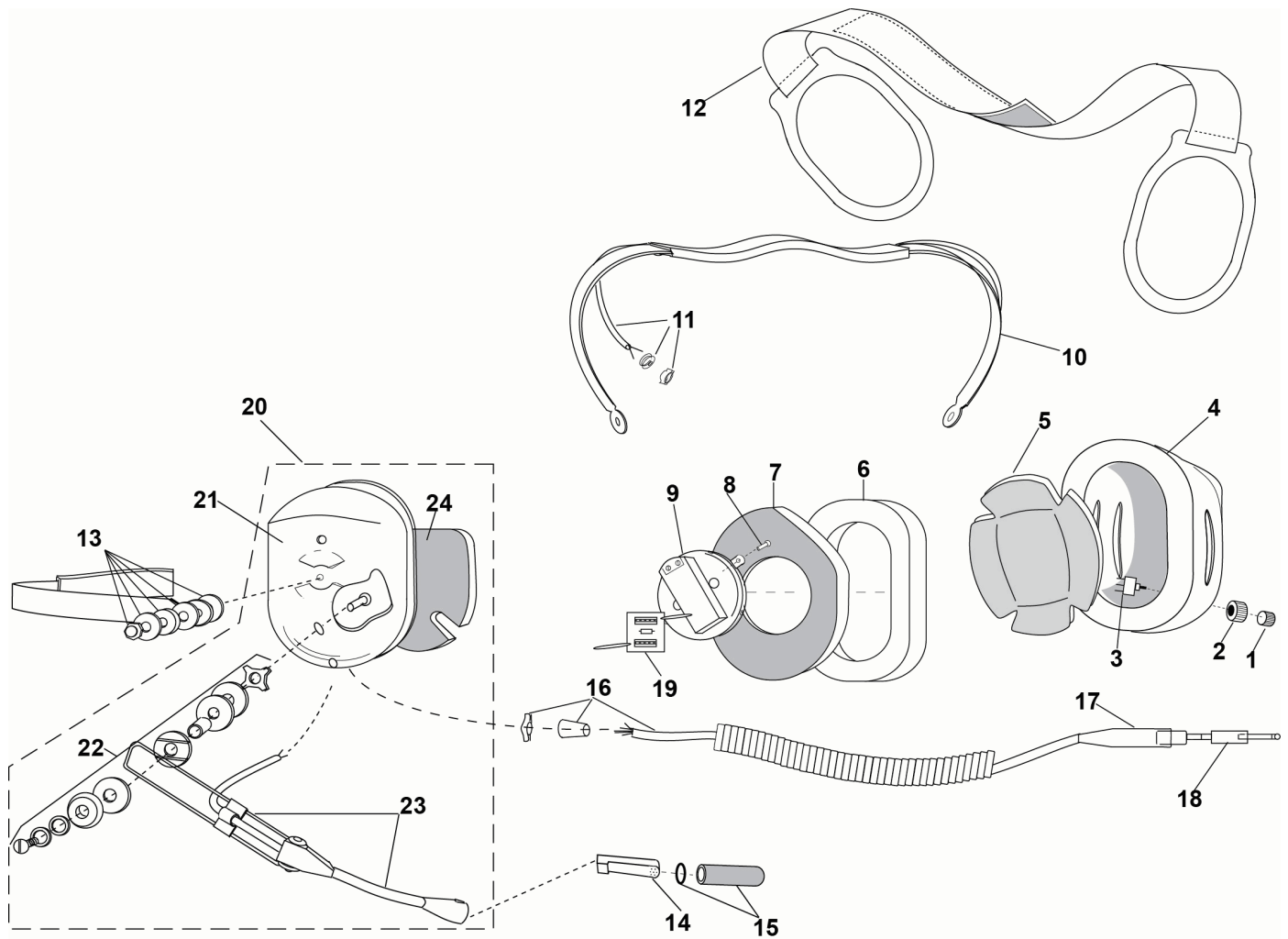




**PARTS LIST**  
**MODEL H3441**



No.	Description	Part No.
1	Switch Cap Kit	41090G-13
2	Switch Guard	13148P-01
3	Push Button Switch	09851P-17
4	Left Dome	15522P-09
5	Dome Filter (1 each)	24636P-03
6	Undercut Gel Earseal (pair)	40863G-02
7	Dome Filter (1 each)	25629P-05
8	Screw (10/pk)	00023M-07
9	Earphone Assembly	10376G-17
10	Spring Assembly	10117G-97
11	Overhead Cord Kit	22607G-11
12	Support Assembly	10370G-03

No.	Description	Part No.
13	Nut and Washer Kit (10 pk)	12052G-02
14	M-7A Electret Mic	09168P-33
15	Mic Protector	40062G-02
16	Communication Cord Assy Kit	18028G-34
17	Bend Relief Sleeve	17836P-03
18	Electrical Connector Kit	18900G-42
19	PCB Assembly	18289G-13
20	Kit, Dome & Mic Boom	40688G-71
21	Left Dome	15522P-07
22	Boom Attachment Kit	12840G-09
23	Mic Boom & Cord Assy	18740G-05
24	Dome Filter (1 each)	11410P-02

ELECTRICAL SCHEMATIC  
MODEL H3441

