



Quick Connection Guide

M3200 Series
HD Digital Video Surveillance Recorder



Package Contents:

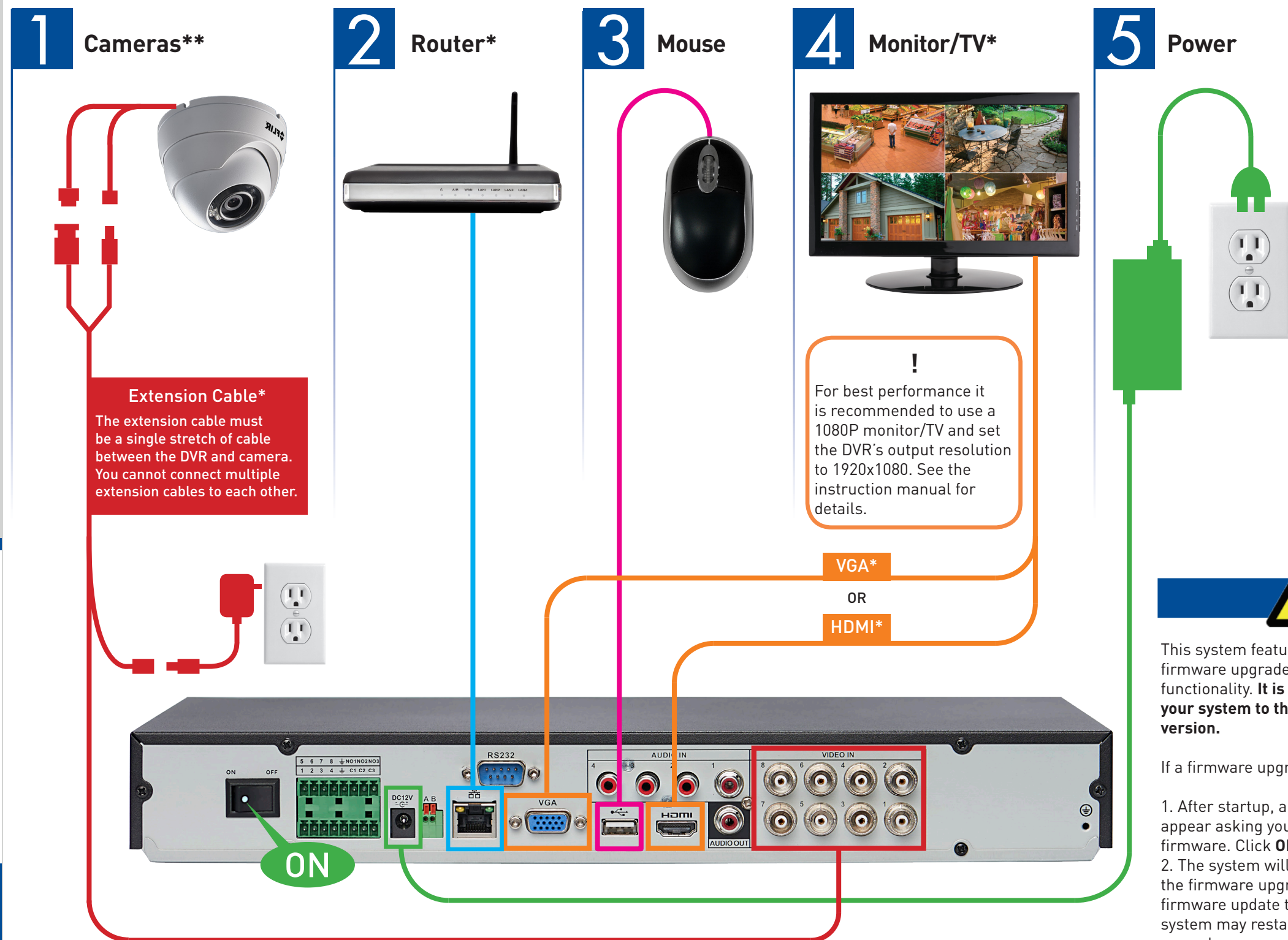


FULL INSTRUCTION MANUAL ONLINE



Software and complete
instruction manual available on:
flirsecurity.com/pro

Connecting your system



8 channel configuration shown. 4/16 channel will have the respective number of video inputs.

**Cameras not included. This system supports analog and FLIR MPX cameras. Extension cables and power adapters for cameras are not included.

*Not included.

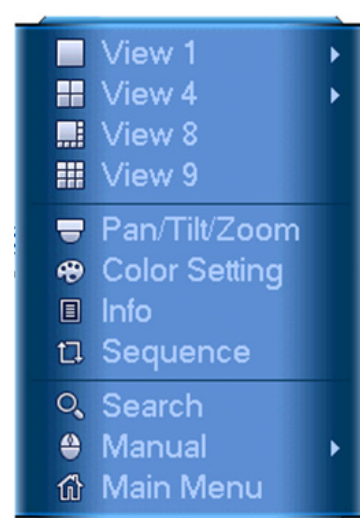
Using the mouse

- Left-click:**
 - Click to open the Navigation Bar. Right-click to close the Navigation Bar
 - During split-screen display mode:** Double-click an individual channel to view it in full-screen. Double-click again to return to the split-screen display mode.
 - While navigating menus:** Click to open a menu option.
- Right-click:**
 - During live view:** Right-click anywhere on the screen to open the Quick Menu.
 - Within system menus:** Right-click to exit menus.



Using the Quick Menu

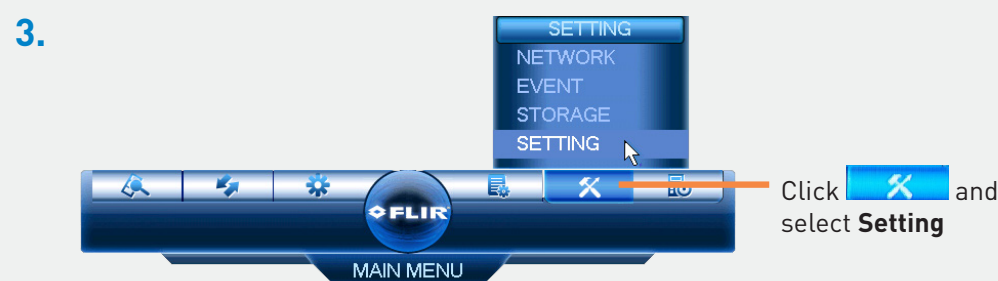
Right-click to open the Quick Menu.



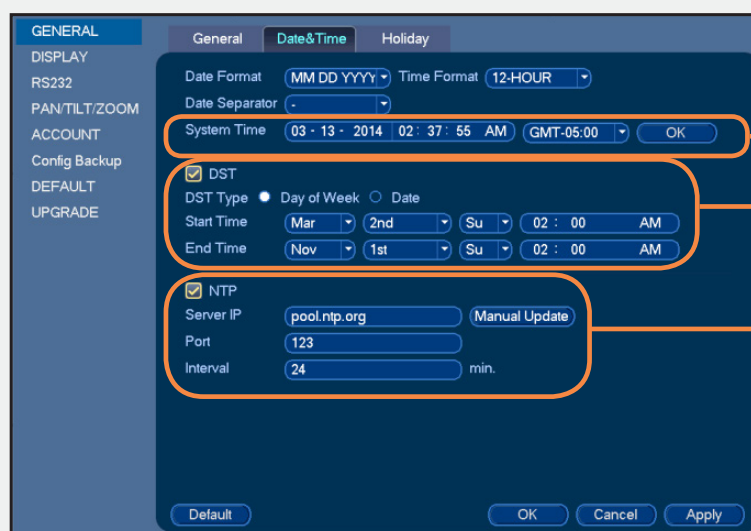
- Select camera/live display view
- Control PTZ cameras (not included)
- Adjust color settings
- View system information
- Start/stop sequence mode
- Search and playback recordings
- Open manual recording controls
- Open Main Menu

Setting the date and time

- In live view, right-click and click **Main Menu**.
- Log in using the system user name (default: **admin**) and password (default: **000000**).



- Click **General** and select the **Date&Time** tab.



Enter the current time and select your time zone, and click **OK**

Check **DST** to enable auto Daylight Savings Time updates

(Optional) Check **NTP** to sync your system with an Internet time server. Click **Manual Update** to instantly update the time

NOTE: A constant Internet connection is required to use NTP

- Click **Apply** to save changes.

It is important to set the correct time to ensure accurate time stamps on video recordings.

Playback and search

- From live view, right-click and then click **Search**.
- Log in using the system user name (default: **admin**) and password (default: **000000**).
- Use the calendar on the right to select the date to playback.
- Use the drop-down menus to select the channels you would like to playback. Click the display options () to playback multiple channels simultaneously.
- Click inside the video bar to select the playback time. Playback starts immediately at the selected time.



Select the day to playback

Select channels to playback

Click inside the bar to select a playback time.