



Quick Connection Guide

M4200 Series
HD Digital Video Surveillance Recorder



Package Contents:



MPX DVR



USB Mouse



Remote Control



Power Adapter + Cable



Ethernet Cable



Quick Start Guides

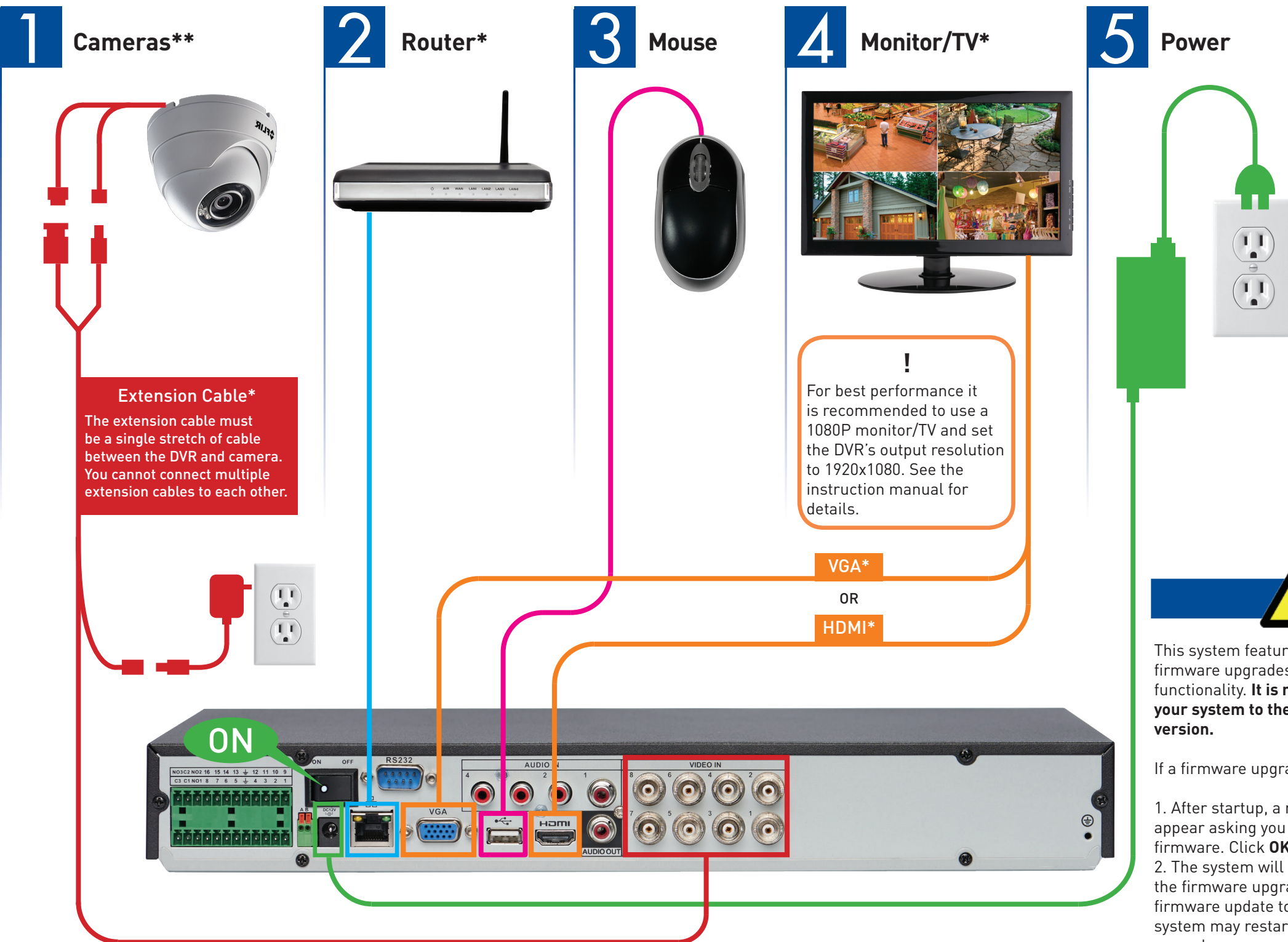
FULL INSTRUCTION MANUAL ONLINE



Software and complete
instruction manual available on:
flir.com/security/support

Information in this document is subject to change without notice. As our products are subject to continuous improvement, FLIR Systems, Inc. and our subsidiaries reserve the right to modify product design, specifications and prices, without notice and without incurring any obligation. E&OE © 2015 FLIR Systems, Inc. All rights reserved.

Connecting your system



8 channel configuration shown. Other channel configurations will have the respective number of video inputs.

**Cameras not included. This system supports analog and FLIR MPX cameras. Extension cables and power adapters for cameras are not included.

*Not included.

!

This system features automatic firmware upgrades for enhanced functionality. **It is required to upgrade your system to the latest firmware version.**

If a firmware upgrade is available:

1. After startup, a notification will appear asking you to upgrade the firmware. Click **OK** to upgrade.
2. The system will download and install the firmware upgrade. Wait for the firmware update to complete. The system may restart during the firmware upgrade process.

DO NOT power off or disconnect the power cable during firmware installation.

M4200_SERIES_QCG_EN_R2

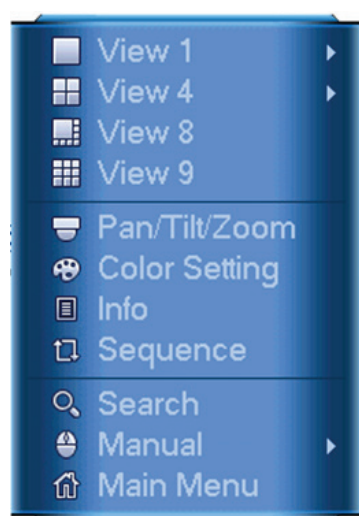
Using the mouse

- Left-click:**
 - Click to open the Navigation Bar. Right-click to close the Navigation Bar
 - During split-screen display mode:** Double-click an individual channel to view it in full-screen. Double-click again to return to the split-screen display mode.
 - While navigating menus:** Click to open a menu option.
- Right-click:**
 - During live view:** Right-click anywhere on the screen to open the Quick Menu.
 - Within system menus:** Right-click to exit menus.



Using the Quick Menu

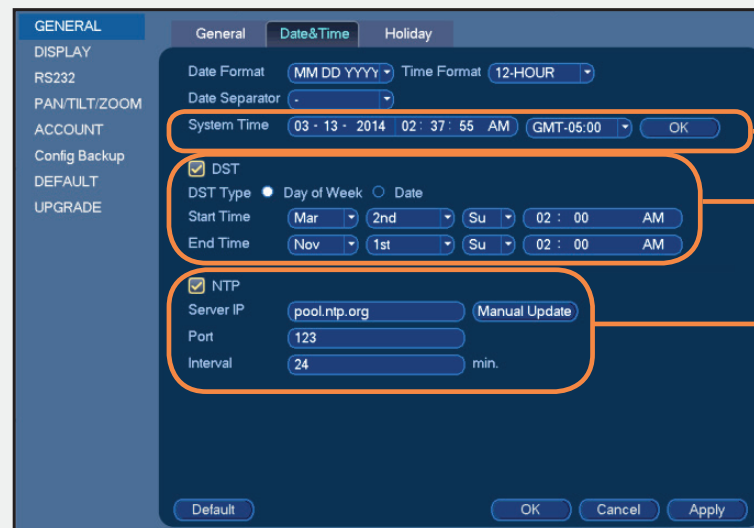
Right-click to open the Quick Menu.



- Select camera/live display view
- Control PTZ cameras (not included)
- Adjust color settings
- View system information
- Start/stop sequence mode
- Search and playback recordings
- Open manual recording controls
- Open Main Menu

Setting the date and time

- In live view, right-click and click **Main Menu**.
- Log in using the system user name (default: **admin**) and password (default: **000000**).
- Click and select **Setting**
- Click **General** and select the **Date&Time** tab.



Enter the current time and select your time zone, and click **OK**

Check **DST** to enable auto Daylight Savings Time updates

(Optional) Check **NTP** to sync your system with an Internet time server. Click **Manual Update** to instantly update the time

NOTE: A constant Internet connection is required to use NTP

- Click **Apply** to save changes.

It is important to set the correct time to ensure accurate time stamps on video recordings.

Playback and search

- From live view, right-click and then click **Search**.
- Log in using the system user name (default: **admin**) and password (default: **000000**).
- Use the calendar on the right to select the date to playback.
- Use the drop-down menus to select the channels you would like to playback. Click the display options () to playback multiple channels simultaneously.
- Click inside the video bar to select the playback time. Playback starts immediately at the selected time.



Select the day to playback

Select channels to playback

Click inside the bar to select a playback time.