



# Quick Connection Guide

M4400 Series  
HD Digital Video Surveillance Recorder



## Package Contents:



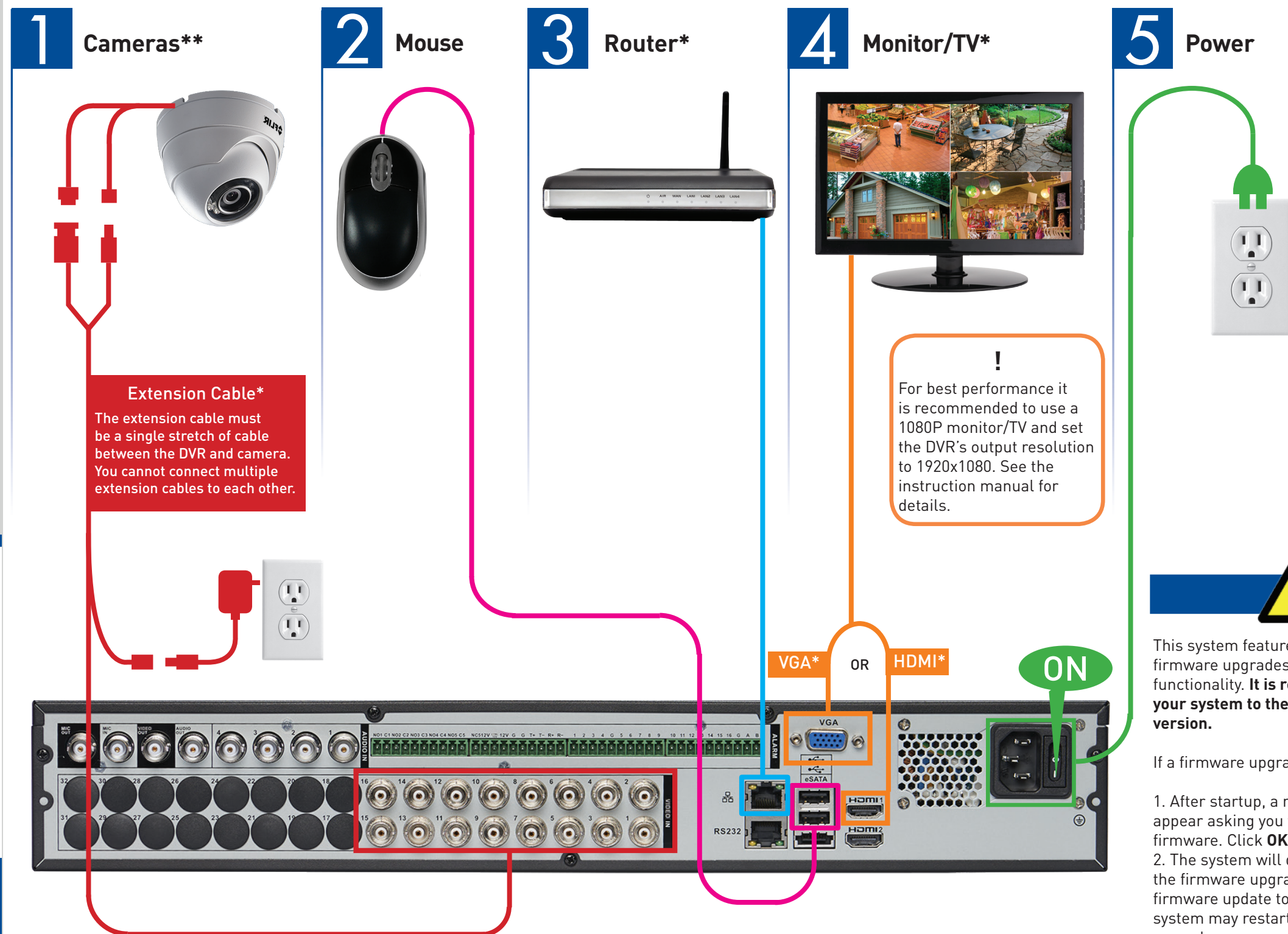
## FULL INSTRUCTION MANUAL ONLINE



Software and complete instruction manual available on:  
[flir.com/security/support](http://flir.com/security/support)

Information in this document is subject to change without notice. As our products are subject to continuous improvement, FLIR Systems, Inc. and our subsidiaries reserve the right to modify product design, specifications and prices, without notice and without incurring any obligation. E&OE © 2015 FLIR Systems, Inc. All rights reserved.

## Connecting your system



16 channel configuration shown. Other channel configurations will have the respective number of video inputs.

\*\*Cameras not included. This system supports analog, FLIR MPX, and IP cameras. Extension cables and power adapters for cameras are not included. See the instruction manual for info on connecting IP cameras.

\*Not included.

This system features automatic firmware upgrades for enhanced functionality. **It is required to upgrade your system to the latest firmware version.**

If a firmware upgrade is available:

1. After startup, a notification will appear asking you to upgrade the firmware. Click **OK** to upgrade.
2. The system will download and install the firmware upgrade. Wait for the firmware update to complete. The system may restart during the firmware upgrade process.

**DO NOT power off or disconnect the power cable during firmware installation.**

M4400\_SERIES\_QCG\_EN\_R1

### Using the mouse

#### 1. Left-click:

- Click to open the Navigation Bar.
- Right-click to close the Navigation Bar
- During split-screen display mode:** Double-click an individual channel to view it in full-screen. Double-click again to return to the split-screen display mode.
- While navigating menus:** Click to open a menu option.

#### Right-click:

- During live view:** Right-click anywhere on the screen to open the Quick Menu.
- Within system menus:** Right-click to exit menus.



### Using the Quick Menu

Right-click to open the Quick Menu.



Select camera/live display view

Control PTZ cameras (not included)

Adjust color settings

View system information

Start/stop sequence mode

Disable beeping alarms

Search and playback recordings

Open manual recording controls

Open Main Menu



If the system is beeping after startup, the Ethernet cable may not be connected or the system may not be connected to the Internet.

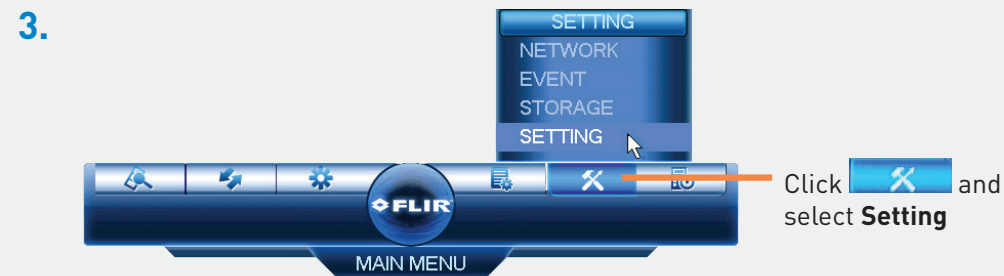
#### To stop the beeping:

- Connect an Ethernet cable from the system to your router and restart the system. **OR**
- Right click and click **Disable Beep**.

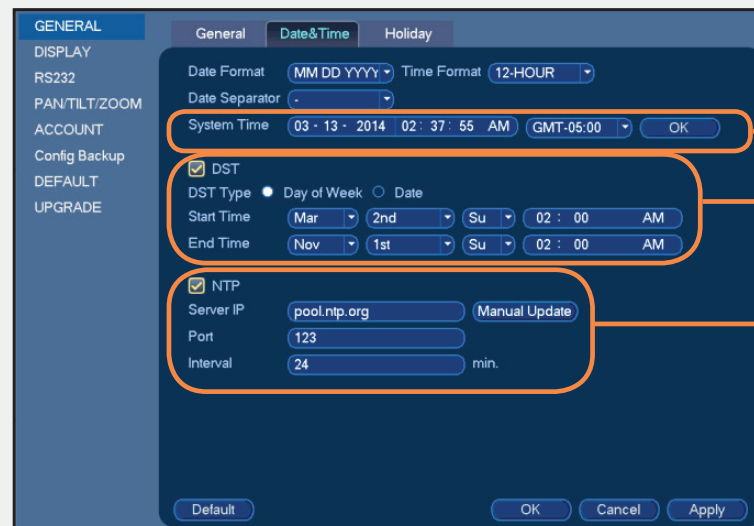
### Setting the date and time

- In live view, right-click and click **Main Menu**.

- Log in using the system user name (default: **admin**) and password (default: **000000**).



- Click **General** and select the **Date&Time** tab.



Enter the current time and select your time zone, and click **OK**

Check **DST** to enable auto Daylight Savings Time updates

(Optional) Check **NTP** to sync your system with an Internet time server. Click **Manual Update** to instantly update the time

**NOTE:** A constant Internet connection is required to use NTP

- Click **Apply** to save changes.

It is important to set the correct time to ensure accurate time stamps on video recordings.

### Playback and search

- From live view, right-click and then click **Search**.
- Log in using the system user name (default: **admin**) and password (default: **000000**).
- Use the calendar on the right to select the date to playback.
- Use the drop-down menus to select the channels you would like to playback. Click the display options ( ) to playback multiple channels simultaneously.
- Click inside the video bar to select the playback time. Playback starts immediately at the selected time.



Select the day to playback

Select channels to playback

Click inside the bar to select a playback time.