



# Quick Connection Guide

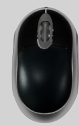
DNR110 Series  
HD Network Video Surveillance Recorder



## Package contents:



NVR



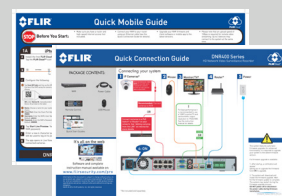
USB Mouse



Power Adapter



Ethernet Cable



Quick Start Guides

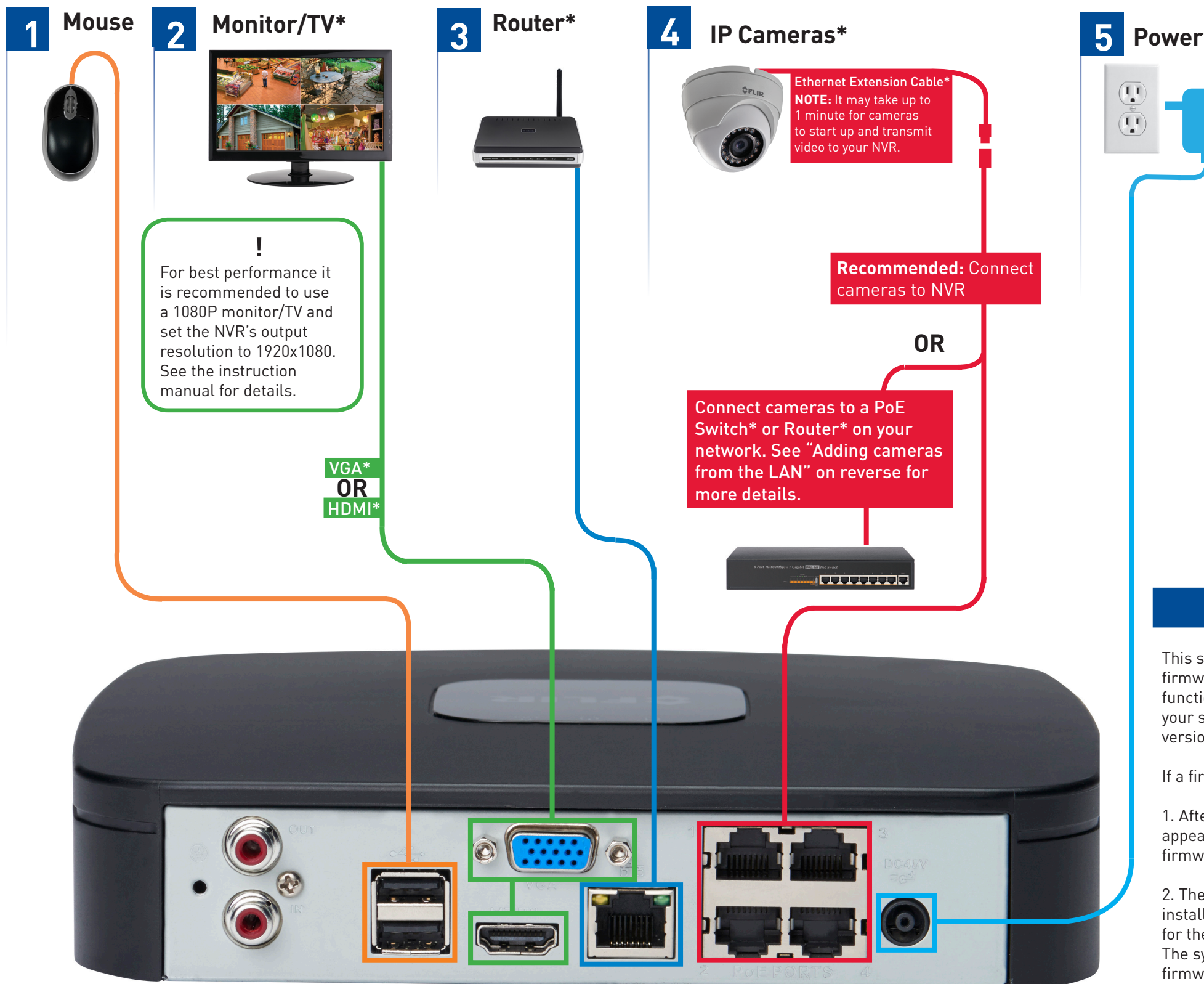
## FULL INSTRUCTION MANUAL ONLINE



Software and complete  
instruction manual available on:  
[flir.com/security/support](http://flir.com/security/support)

Information in this document is subject to change without notice. As our products are subject to continuous improvement, FLIR Systems, Inc. and our subsidiaries reserve the right to modify product design, specifications and prices, without notice and without incurring any obligation.  
E&OE © 2015 FLIR Systems, Inc. All rights reserved.

## Connecting your system



4-channel configuration shown. Other channel configurations will have the respective number of video inputs.

\*Not included/sold separately.

### Using the mouse

#### Left-click:

- Click to open the Navigation Bar.
- Right-click to close the Navigation Bar.
- During split-screen display mode:** Double-click an individual channel to view it in full-screen. Double-click again to return to the split-screen display mode.
- While navigating menus:** Click to open a menu option.

#### Right-click:

- During live view:** Right-click anywhere on the screen to open the Quick Menu.
- Within system menus:** Right-click to exit menus.



### Adding cameras from the LAN

Follow the steps below to add cameras that are not directly connected to the Power over Ethernet (PoE) ports on the back of the NVR.

**NOTE:** Please visit [flir.com/security/support](http://flir.com/security/support) for a list of compatible IP cameras.

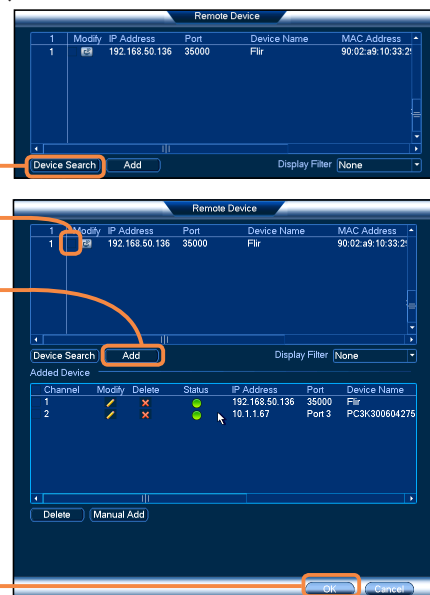
- Connect the camera to a router or switch on the same network as the NVR.
- Right-click and select **Device Search**. Log in using the admin account (default User Name: **admin**; default Password: **000000**).



- Click **Device Search**.
- Check the camera(s) you would like to add.
- Click **Add**. The Status indicator turns green to show the camera is successfully connected.

**NOTE:** If the Status indicator is red, click to update the camera user name, password, ports, and manufacturer as needed.

- Click **OK** to save changes.



### Setting the date and time

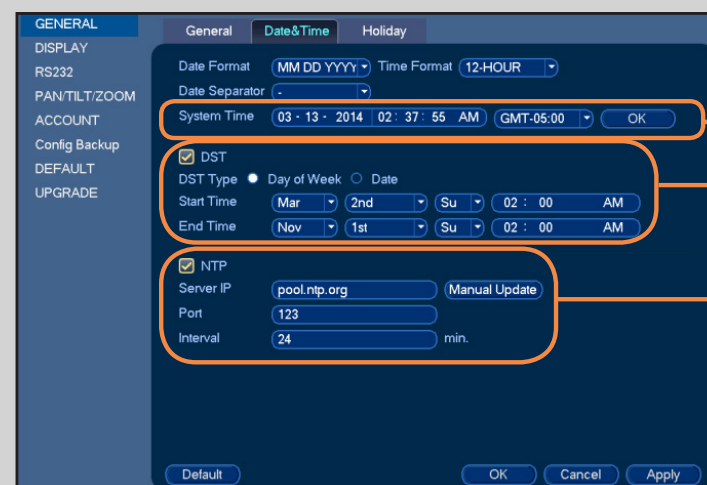
It is important to set the correct time to ensure accurate time stamps on video recordings.

- In live view, right-click and click **Main Menu**.
- Log in using the system user name (default: **admin**) and password (default: **000000**).
- 



Click and select **Setting**

- Click **General** and select the **Date&Time** tab.



Enter the current time and select your time zone, and click **OK**

Check **DST** to enable auto Daylight Savings Time updates

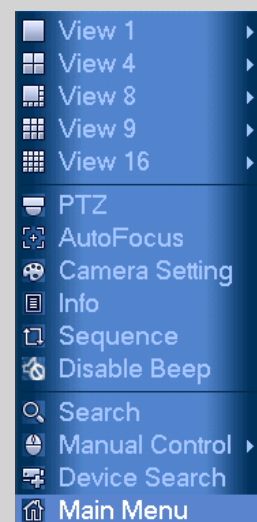
(Optional) Check **NTP** to sync your system with an Internet time server. Click **Manual Update** to instantly update the time

**NOTE:** A constant Internet connection is required to use NTP

- Click **Apply** to save changes.

### Using the Quick Menu

Right-click to open the Quick Menu.



Select camera/live display view

Control PTZ cameras (not included)

Control auto-focus cameras (not included)

Adjust color settings

View system information

Start/stop sequence mode

Disable beeping alarms

Search and playback recordings

Open manual recording controls

Add IP cameras over the LAN

Open Main Menu

### Playback and search

- From live view, right-click and then click **Search**.
- Log in using the system user name (default: **admin**) and password (default: **000000**).
- Use the calendar on the right to select the date to playback.
- Use the drop-down menus to select the channels you would like to playback. Click the display options () to playback multiple channels simultaneously.
- Click inside the video bar to select the playback time. Playback starts immediately at the selected time.



Select the day to playback

Select channels to playback

Click inside the bar to select a playback time.