



ACU-5000™

Next Generation IP Based Interoperability Gateway



The ACU-5000 retains the great features that made Raytheon's ACU product line the industry leader – with a technology refresh that allows a smaller form factor plus many new capabilities.

Benefits

- Incredibly versatile; 12 communications channels that can be configured as user-defined combinations of radio, phone, or VoIP (SIP) channels; no need to swap hardware modules to set up for new mission
- Built-in four port Ethernet switch reduces overall system hardware needs
- Web-based control and configuration, including an intuitive help-rich graphical user interface; no need to load custom applications on control PCs
- Compact form factor ideal for mobile and tactical applications
- Phone, radio, and VoIP phone users can access system via Dual-Tone Multi-Frequency (DTMF) signaling; speed-dial capability included
- Handset and speaker for local monitor and communications
- Two units can be connected together to create a 24 channel system with a single unified control interface

Broad-Range Mission Support

Emergencies, disasters, and other planned or unplanned incidents bring together multiple agencies and a wide variety of communications gear.

The ACU-5000 enables seamless communications among these first responders. Optimized cables and pre-loaded settings ensure quick interface of radios, phones, satellite (Sat) phones, etc. Interoperability networks (nets) can be quickly put together allowing appropriate personnel to talk with each other, all using their own equipment, whether phones, various types of radios or Voice Over Internet Protocol (VoIP) devices.

Interoperability nets are local, meaning all audio bridging is done within the ACU-5000, and IP links make the system accessible to remote users or other gateways.

Versatility is Key

Emergencies can't be planned, so equipment versatility is essential when immediate compatibility with the users' environment is required.

The ACU-5000 begins with the features developed by Raytheon over the past decade. These include: a suite of sophisticated Digital Signal Processing (DSP) algorithms to resolve typical radio interoperability problems, interface cables for hundreds of radio makes and models, and quick setup templates for rapid deployment.

The ACU-5000 also features an intuitive Web-based Graphical User Interface (GUI), a four-port Ethernet switch including rack mount version, and the ability to configure its communications channels to the type needed; radio, telephone, VoIP (SIP), or Raytheon's proprietary Radio over Internet

Protocol (RoIP). This feature allows the ACU-5000 to be quickly reconfigured as needs change, with no need to carry or swap out hardware modules.

Intuitive Must Be More Than a Buzzword

Interoperability is most vital during emergencies where effective communications can help calm a chaotic situation. This environment is not a place where operational errors can be tolerated.

Intuitive operation and control were guiding factors in the design of the ACU-5000's user-interface which provides instantaneous comprehension of the current system status, easy point-and-click/drag-and-drop control capability, and a variety of context-sensitive help available just a mouse click away.

Solution Summary

- Allows interoperable networks to be put together quickly, facilitating communication among appropriate personnel, using their own phones, various types of radios, and VoIP devices
- Provides audio bridging inside the device; IP links make the system accessible to remote users or other gateways
- Features an intuitive Web-based Graphical User Interface (GUI) for fast configuration of its communication channels, with no need to carry or swap out hardware modules
- Built-in Web-based GUI offers instantaneous comprehension of the current system status, easy point-and-click/drag-and-drop control capability, and a variety of context-sensitive help
- Access controls allows system administrator to tailor permissions to individual users, limiting sensitive operations to authorized users only

Applications

- Tactical
- Mobile
- Transportable
- Fixed Site

Mission Support

- 24/7 support
- Optional extended warranty (additional charge)
- GUI includes comprehensive context-sensitive help

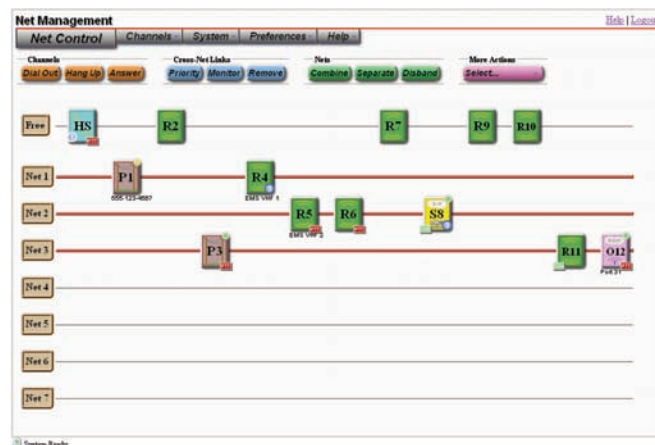


Photo caption: Screen shot of the ACU-5000 Graphical User Interface (GUI)



Photo caption: Top: ACU-5000 table top version. Bottom: ACU-5000 rack mount version.

Sales Inquiries:

publicsafetysales@raytheon.com

Support Inquiries:

publicsafetysupport@raytheon.com

Media Inquiries:

NCS.PR@raytheon.com

www.raytheon.com/publicsafety

Raytheon

Customer Success Is Our Mission