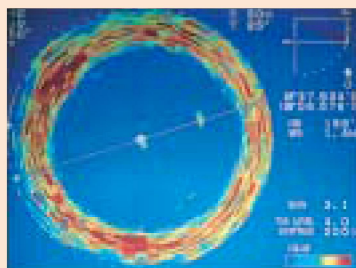


CROSS SECTION SCAN

The CH-250 has an unique "Cross Section Scan" mode. You can instantly view the vertical plane in a specified direction by pressing the "CUSTOM MODE BUTTON".

It is useful for evaluating the concentration and location of the targeted fish school or navigation purposes.



Press the
"CUSTOM MODE BUTTON"

