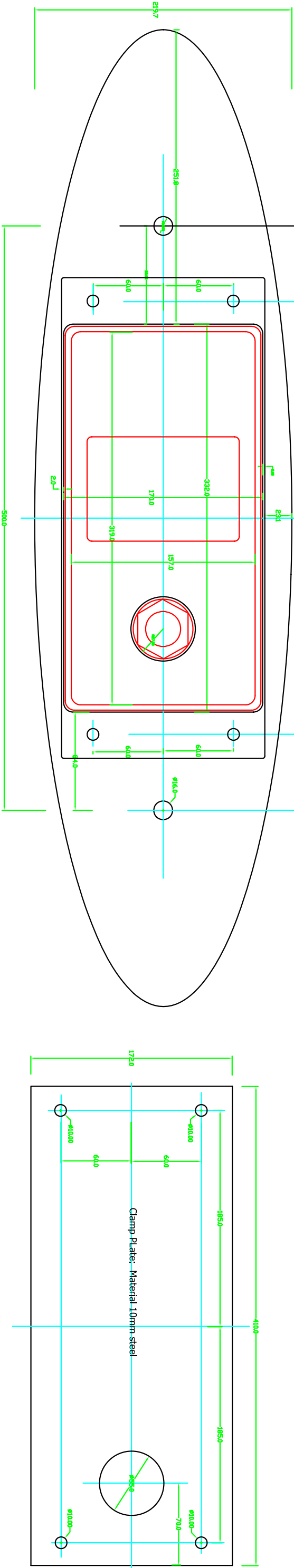
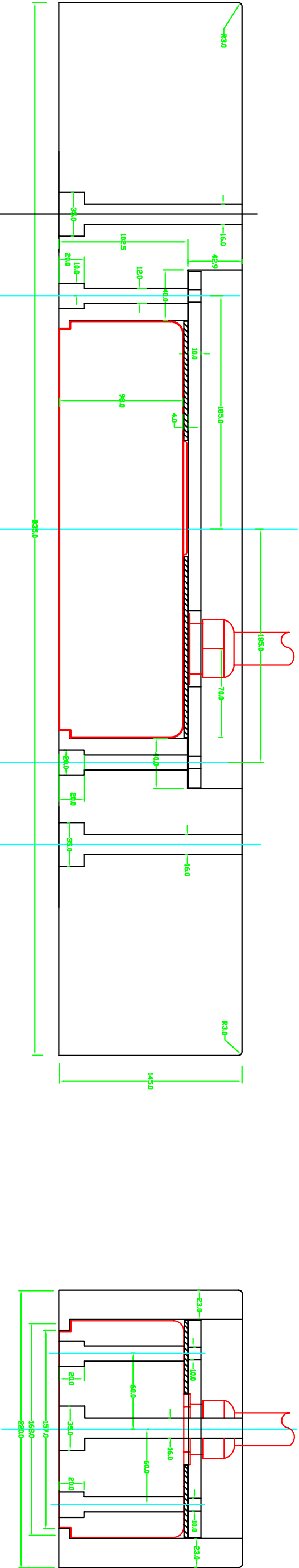


10mm clamp plate with 4mm rubber gasket underneath.



Note: All Equipment Cases to be Earthed

Installation to comply with applicable cl of:

(1) LRS +100A1, Ice Classic, LMC, UMS

(2) IEC Stds, IMD & SOLAS – per TRS

(3) IEC60533 for EMI/EMC – per TRS

(4) NZ Maritime Rules – per TRS

(5) Equip supplier install reqmts

PROJECT : WASSP		STATUS : PRELIMINARY		NO.		DATE		DETAILS	
TITLE : WMBT 160MK2 Transducer Fairing Block		SHEET : 1 of 1		A		23/10/08		ORIGINAL DRAWING	
PREPARED BY : V Henderson		CHECKED BY : B Germain		APPROVED BY : N Anderson		SCALE : 1:1		DRAWING NO. : W/BMT160MK2 FAIRING	
						DATE : 23-10-2008		REVISION : A	

