

- How to restore factory default of FCV-1150 (Ver 03.01)
- Start screen



Fig.1

1. Please keep pushing the range key until end the start screen. (Fig.2)



Fig.2

2. The following screens are displayed, and push the range key, please. (Fig3)

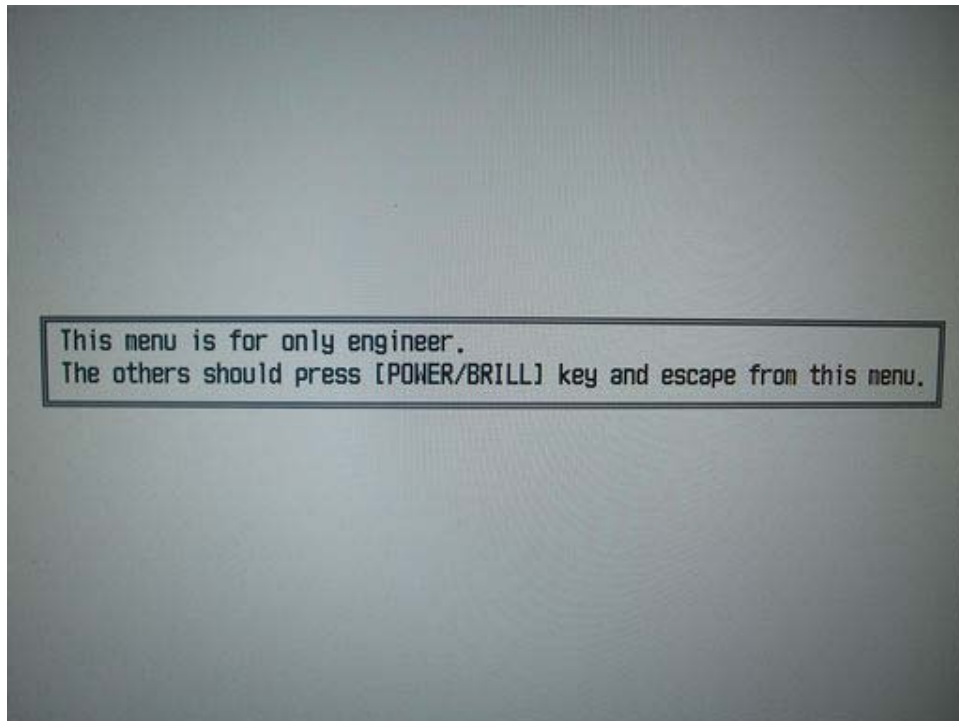


Fig.3

3. Please press enter key to choose "Master Reset". Afterwards, the unit is turned off automatically. (Fig4)

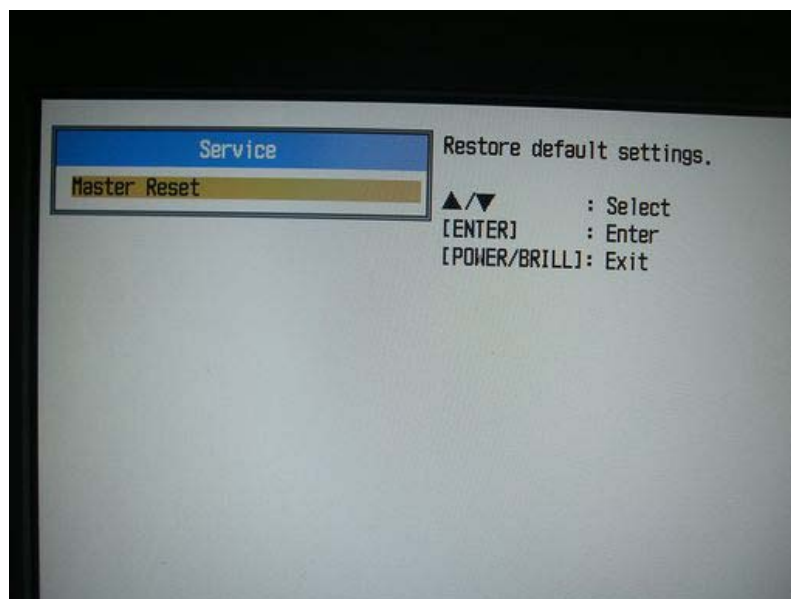


Fig.4

4. Please turn on power. After the start screen is displayed, the following screens are displayed. (Fig5)

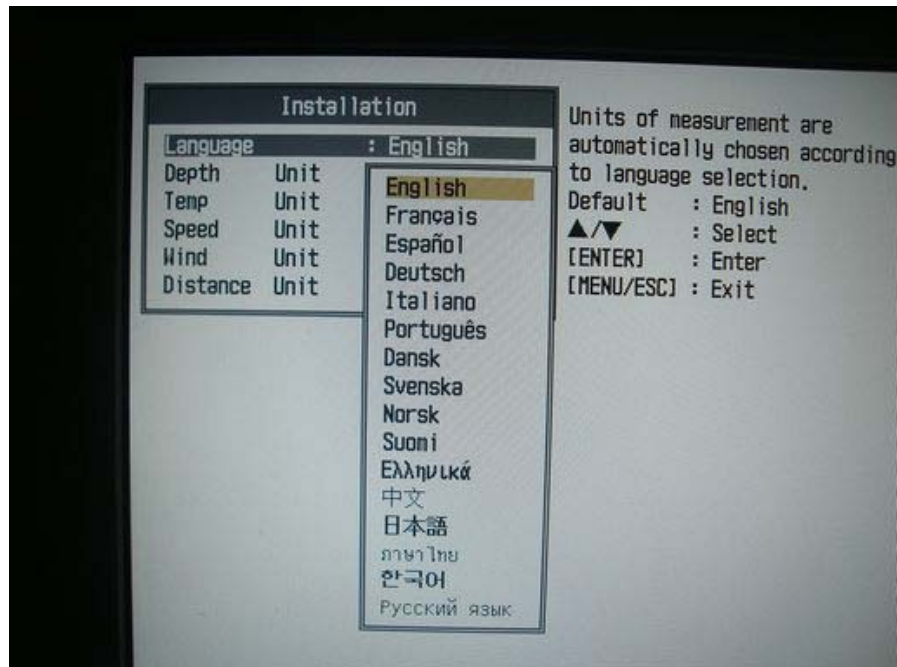


Fig.5

5.The setting was initialized. (Fig7)

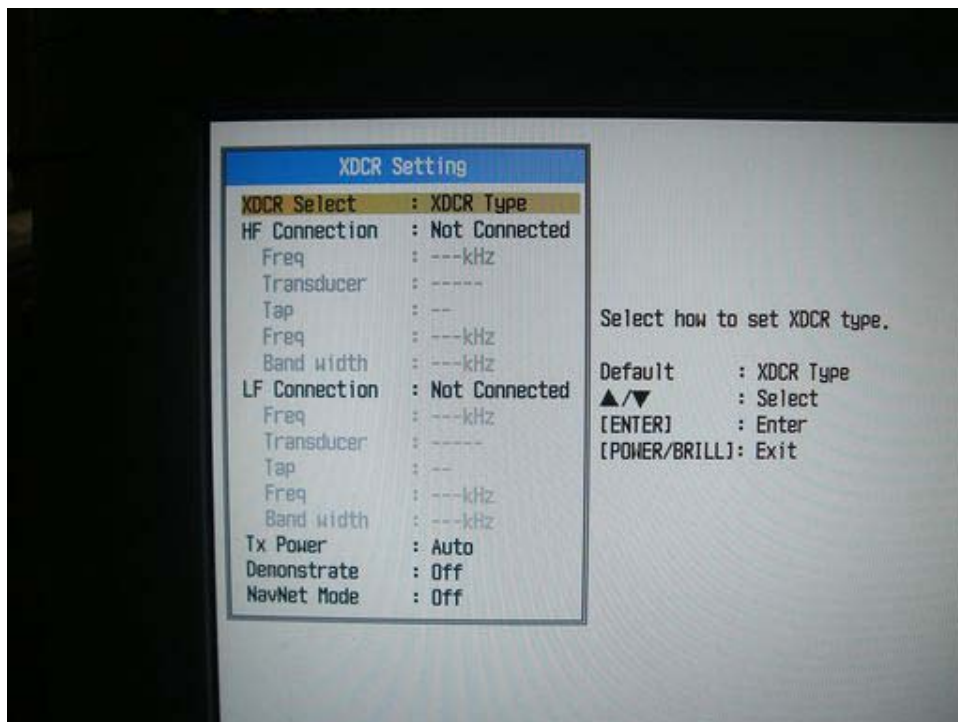


Fig.7