

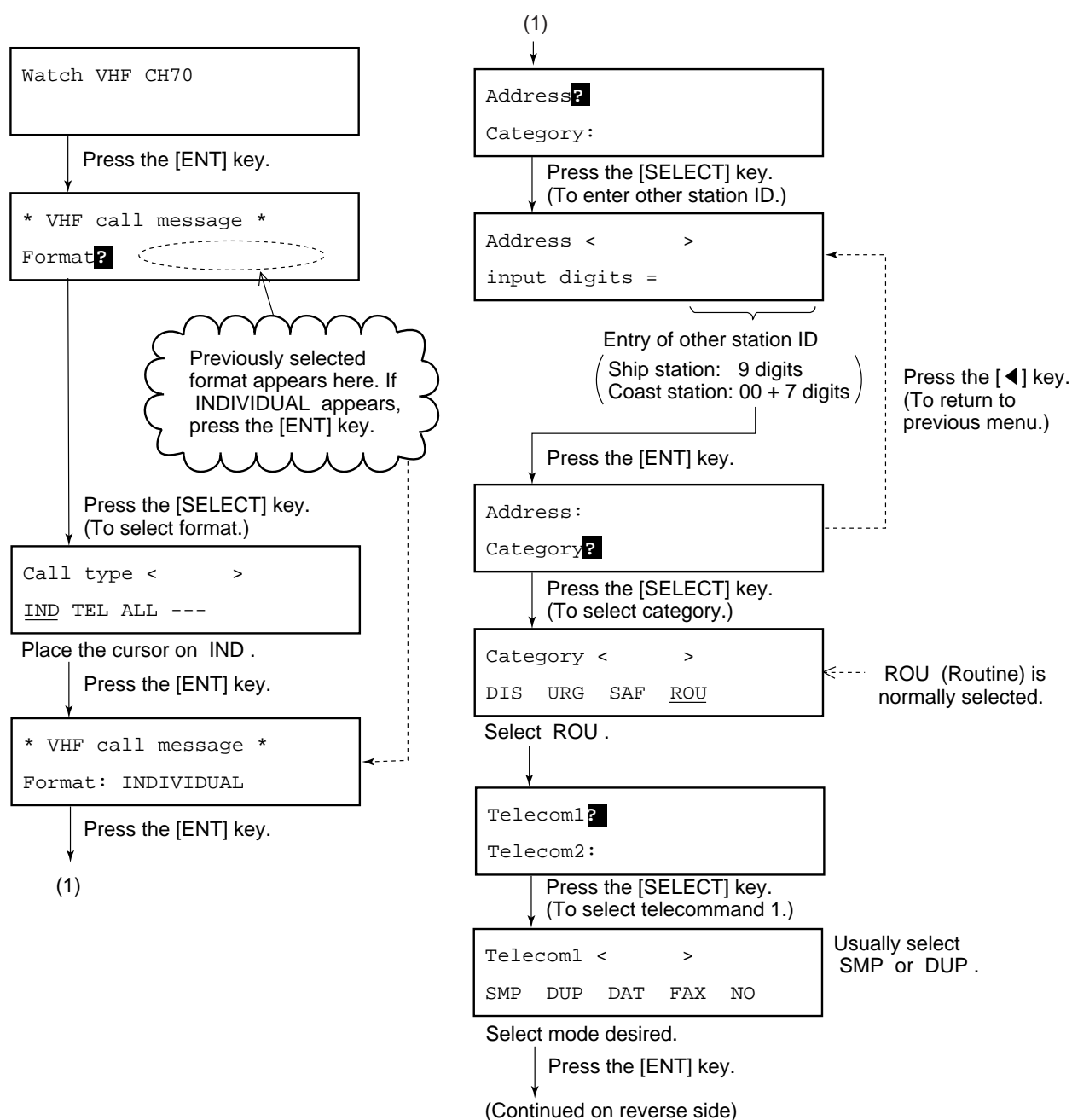
VHF RADIOTELEPHONE FM-8500

Operator's Guide

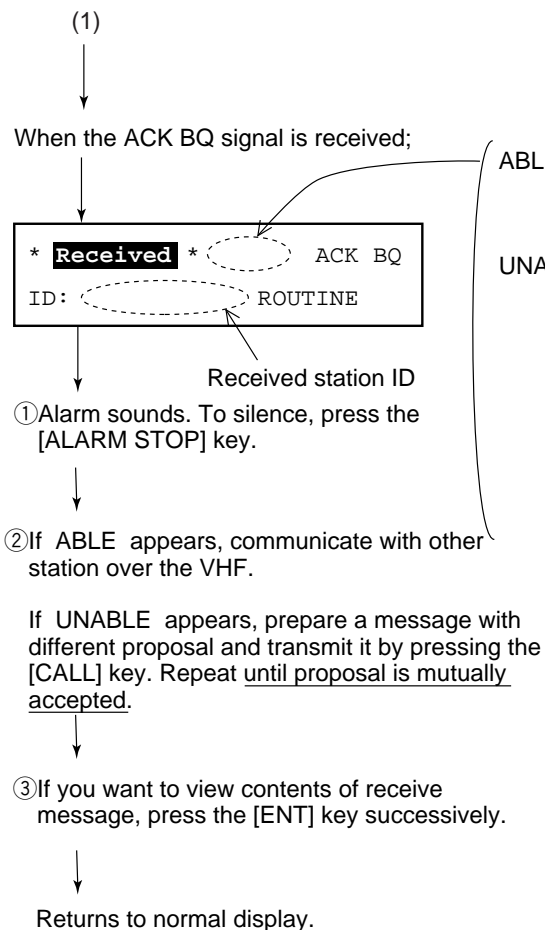
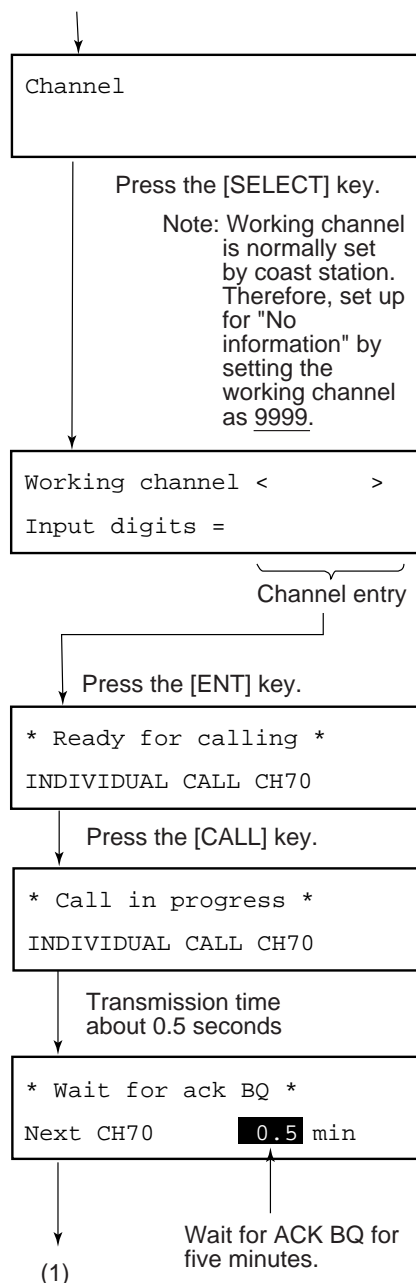
The purpose of this operator's guide is to provide the basic operating procedures for this equipment. For detailed information, see the operator's manual. For distress procedure, see the "distress procedure card" provided with the equipment.

Individual Call

The individual call is for sending message to a specific station. After transmitting message (called ACK RQ transmission), wait to receive the acknowledge back (ACK BQ) signal from receiving station. You should receive it within five minutes.



(Continued from front side)



ABLE: Receiving station accepts working channel proposed by your ship.

UNABLE: "16" is displayed when other ship rejected working channel proposed by your ship. If coast station was called, however, the LCD shows "QUEUE INDICATION," meaning the coast station is busy. Wait on channel designated; the coast station will contact you.

