

FURUNO®

DOPPLER SONAR CURRENT INDICATOR

Model **CI-35**



The future today with FURUNO's electronics technology.

FURUNO ELECTRIC CO., LTD.

9-52 Ashihara-cho, Nishinomiya City, Japan Telephone: +81 (0)798 65-2111

Telefax: +81 (0)798 65-4200, 66-4622, 66-4623

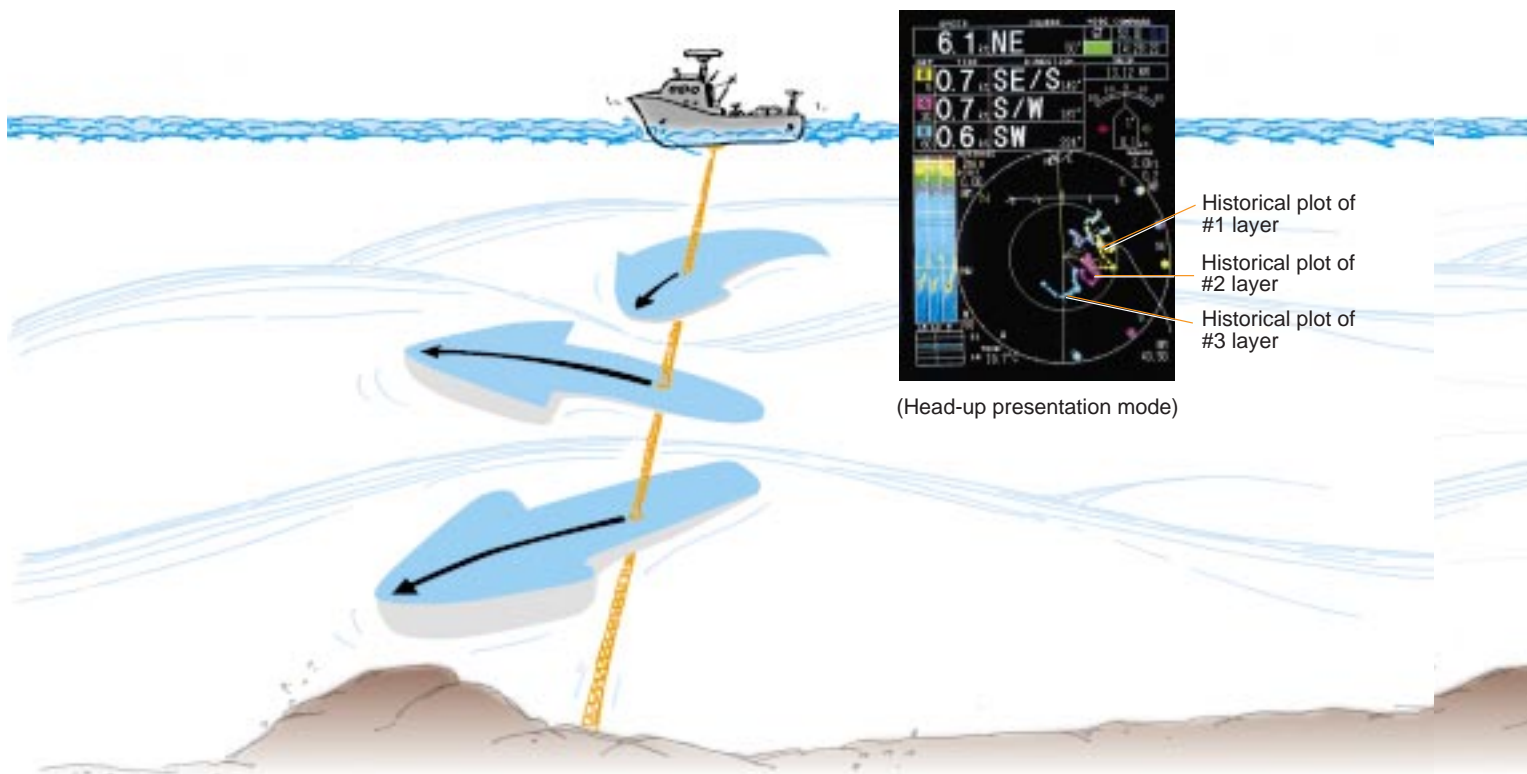
Catalogue No. M-1519

TRADE MARK REGISTERED
MARCA REGISTRADA

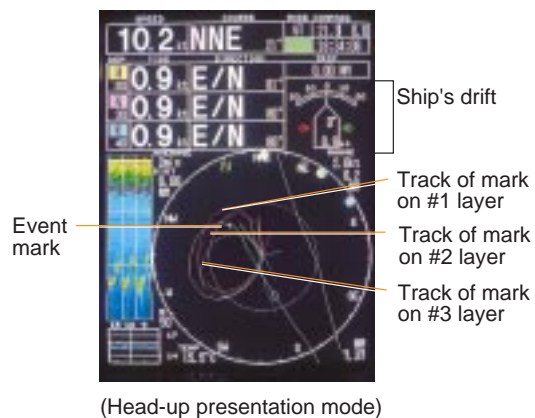
ACCURATE, DYNAMIC MEASUREMENT

- Compact 3-unit design for ease of installation and maintenance
- High-resolution 12-inch color CRT
- Continuous display of Tide speed and direction at the selected three depth layers
- Ship's track and water temperature plotted on screen
- Entry of 25 event marks and 25 tide modeling marks to enable float drift prediction
- Tide vector display
- Track display

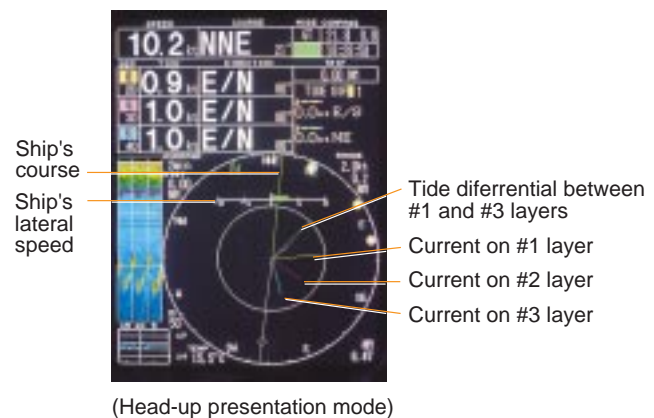
Historical plots of currents



Ship's drift, Tracks of mark

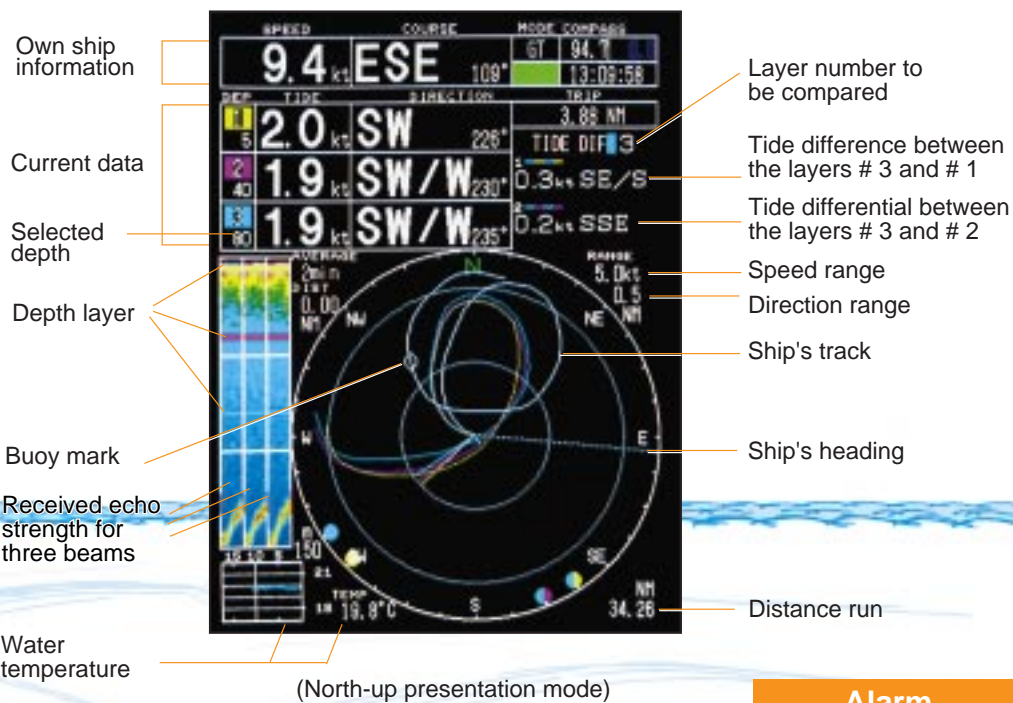


Ship's lateral speed, Tide differential



INSTRUMENTS OF OCEAN CURRENT

Ship's track, Current, Tide differential



Alarm



Menu



The FURUNO CI-35 is a new advanced Doppler Sonar Current Indicator. It is suitable for every type of fishing vessel from large to small.

The CI-35 displays tide speed and direction at three depth layers and surface water temperature on the 12-inch color CRT. In addition, navigation information including position, course, and ship's track can be displayed with the connection of external navigation equipment. Using this information, you can predict net shape, and plan when to throw your net.

Emission of three sonic beams greatly reduces the effects of the ship's up/down motion and pitch/roll for a continuous display of tide information, providing highly accurate current measurement.

The CI-35 consists of a display unit, transceiver unit and transducer. The transducer is compact and light weight for ease of installation and future maintenance.

SPECIFICATIONS OF CI-35

1. Display

12-inch, high-resolution color CRT, 16 colors

2. Measurements

Current

Speed: 0.0 to 9.9 knots

Direction: 360°

Number of current: Three layers displayed

Ship

Speed: -10 to 30 knots (fore-aft)

-9.9 to +9.9 knots (port-starboard)

Direction: 360°

3. Depth Range (For current measurement)

2 to 250 m

(Over 15 m of water depth is required in Ground Tracking mode. Over 40 m of water depth is required in Water Tracking mode)

4. Accuracy

Current

±2% of ship's speed or 0.2 kt, whichever is greater

Ship's speed

±1% or 0.1 kt, whichever is greater

5. Number of Beams

Three beams

6. Tilt

75° each

7. System Frequency

130 kHz

8. Data Input/Output (NMEA 0183 v.1.5/2.0)

Input

\$-ZDA, \$-ZLZ, \$-ZZU, \$-RMC, \$-RMA,

\$-GLL, \$-VTG, \$-HDT, \$-HDM, \$-HCD,

\$-HCC, \$-DBS, \$-DBT, \$-DBK, \$-MTW

Output

\$VDVCD, \$VDVDR, \$VDVHW, \$VDVTG, \$VDVBW

Power Supply

- 115/230 VAC, 1ø, 50/60 Hz, 300 VA (800 VA max)

Equipment List

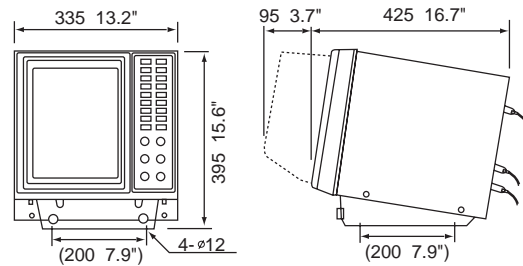
Standard

1. Display unit 1 unit
2. Transceiver unit 1 unit
3. Transducer unit with 10 m cable 1 unit
4. Thru-hull pipe CI-620-K-S for steel hull 1 pc
5. Junction box
6. Installation materials and spare parts

Optional

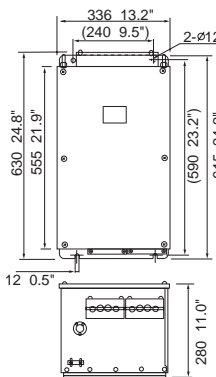
1. Transducer
2. Thru-hull pipe
3. Transducer tank
4. Signal cables for external equipment
5. Extension cable for
Tranceiver - Junctionbox 6651067
Display - Tranceiver S66-4-20(20m) S66-4-30(30m)

Display unit 19 kg 42.0 lb



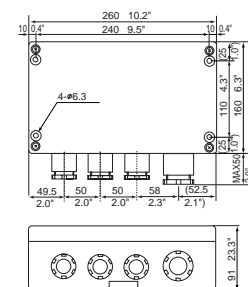
Transceiver unit

32 kg 70.5 lb



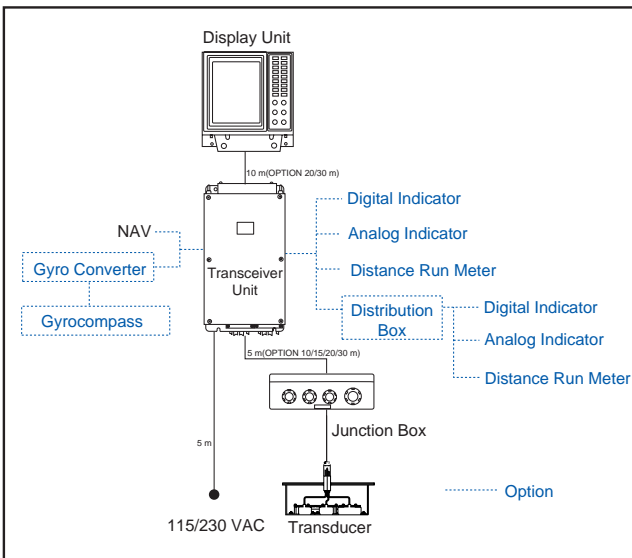
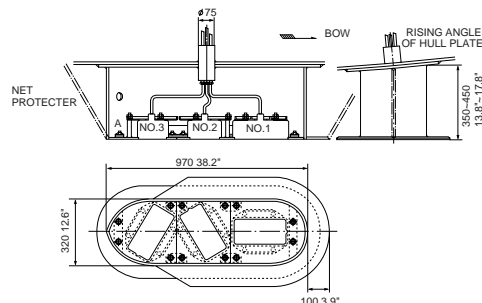
Junction box

3 kg 6.6 lb



Transducer

140 kg 308.6 lb



SPECIFICATIONS SUBJECT TO CHANGE WITHOUT NOTICE

FURUNO U.S.A., INC.

Camas, Washington, U.S.A.
Phone: +1 360-834-9300 Telefax: +1 360-834-9400

FURUNO (UK) LIMITED

Denmead, Hampshire, U.K.
Phone: +44 2392-230303 Telefax: +44 2392-230101

FURUNO FRANCE S.A.

Bordeaux-Mérignac, France
Phone: +33 5 56 13 48 00 Telefax: +33 5 56 13 48 01

FURUNO ESPAÑA S.A.

Madrid, Spain
Phone: +34 91-725-90-88 Telefax: +34 91-725-98-97

FURUNO DANMARK AS

Hvidovre, Denmark
Phone: +45 36 77 45 00 Telefax: +45 36 77 45 01

FURUNO NORGE A/S

Alesund, Norway
Phone: +47 70 102950 Telefax: +47 70 127021

FURUNO SVERIGE AB

Västra Frölunda, Sweden
Phone: +46 31-7098940 Telefax: +46 31-497093

FURUNO SUOMI OY

Helsinki, Finland
Phone: +358 9 341 7570 Telefax: +358 9 3417 5716

00025B Printed in Japan