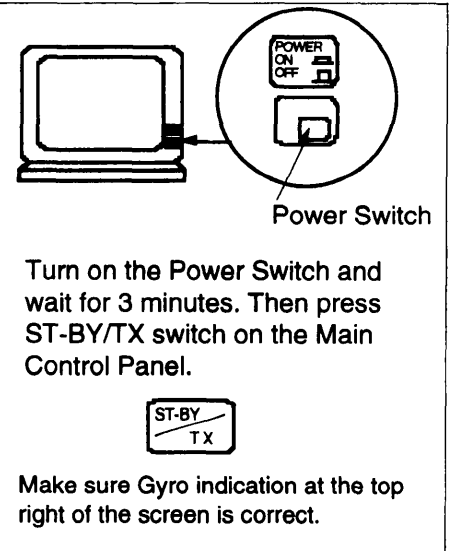
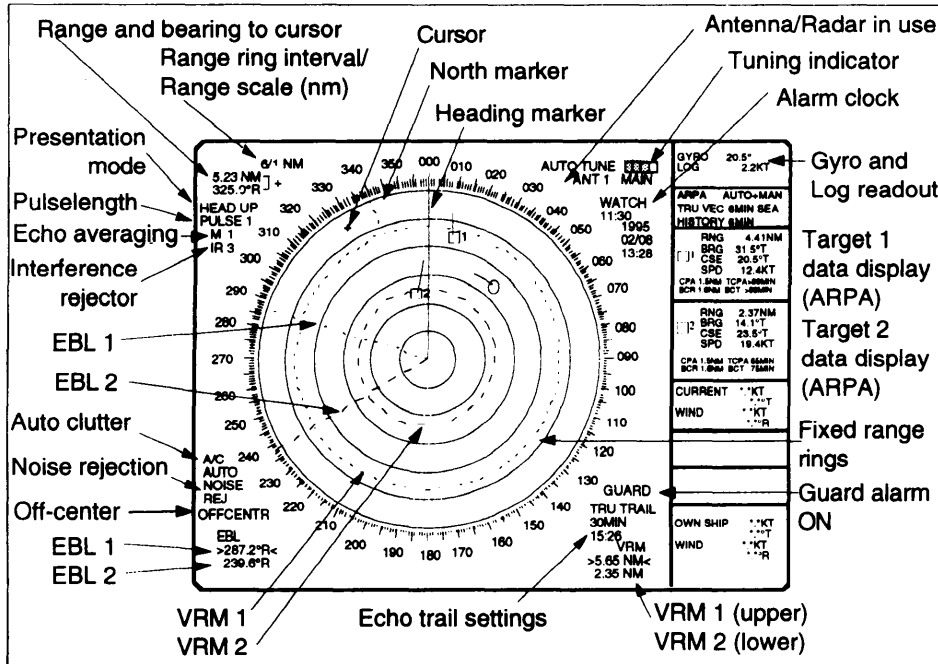


# FURUNO®

## RADAR FR/FAR-2805 Series Operator's Guide



EBL ON/OFF and Control  
Pressing ON toggles EBL 1 and EBL 2. Relative or True at the lower left corner of the screen.

GAIN, A/C RAIN, A/C Sea and BRILL controls are of push-and-rotate type.

A/C RAIN Control  
Reduces clutter from rain, snow, clouds.

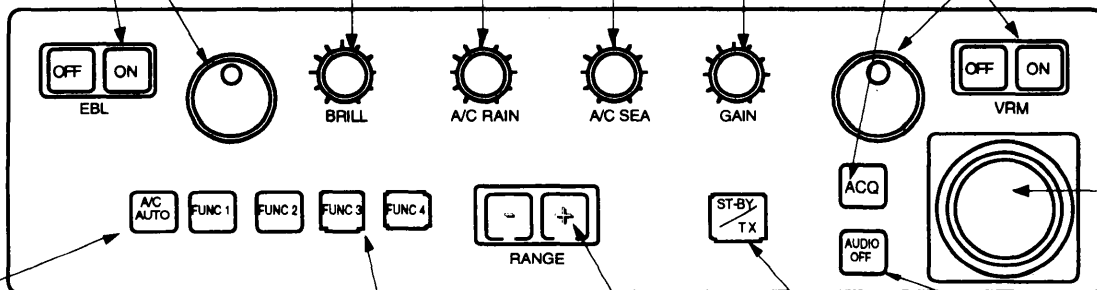
GAIN Control  
Adjusts receiver sensitivity.

BRILL Control  
For entire screen

A/C SEA Control  
Reduces sea clutter.

ACQUIRE Key  
Press this key after selecting a target with trackball. The target will be acquired in 30 s.

VRM ON/OFF Keys and Control:  
Press ON and rotates the control. Toggle 2 VRMs by pressing ON key.



A/C AUTO Key reduces sea and rain clutter at preset level. Permits manual override by A/C SEA and A/C RAIN controls.

⚠ See warning in Manual

Function Keys (Example)  
#1: Area, Detection  
#2: ES, EA setup  
#3: ES, EA setup  
#4: Watch Alarm

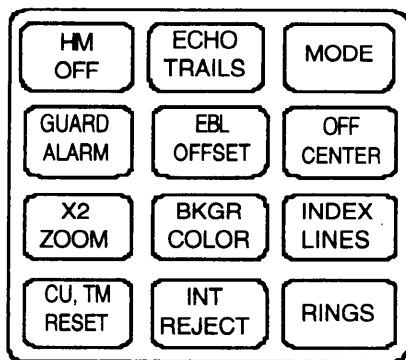
RANGE Keys  
Select range scales.

TRANSMIT Switch

AUDIO OFF Key  
Silences audible alarm (except for guard alarm) and ARPA generated alarm (FAR-2805 Series).

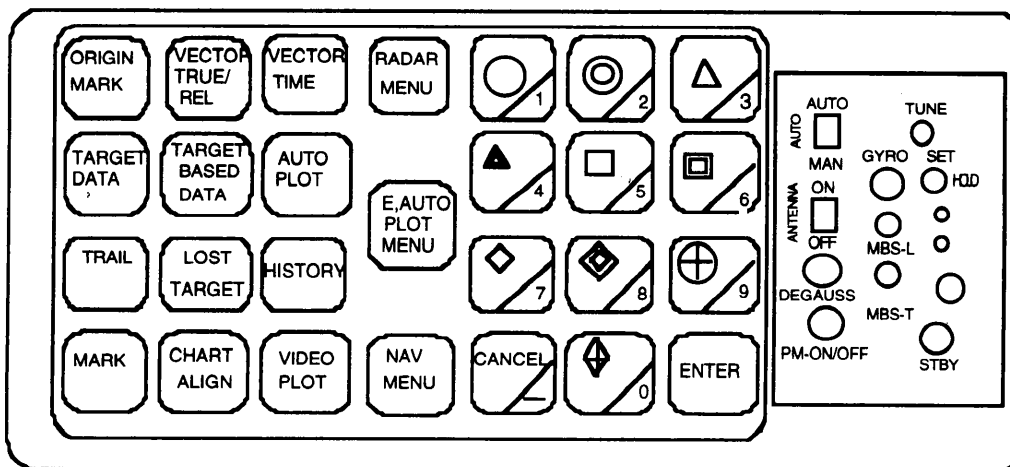


FURUNO ELECTRIC CO., LTD.



**HM OFF:** Temporarily erases the heading line.  
**ECHO TRAILS:** Target afterglow.  
**MODE:** Head-up, Head-up/TB, North-up, Course-up and True Motion.  
**GUARD ALARM:** Guard alarm.

**EBL OFFSET:** Offcenters sweep origin.  
**BKGR COLOR:** Background color.  
**OFF CENTER:** Adjust the trackball and press [OFF CENTER] key.  
**INDEX LINES:** Shows or erases parallel index lines.  
**X2 ZOOM:** For R-type only.  
**CU, TM RESET:** Resets heading line to 000° on Course-up. Resets OS to 50% radius in TM mode.  
**INT REJECT:** Reduces radar interference.  
**RINGS:** Adjusts the brightness of range rings.



**RADAR MENU:** Sets RADAR parameters.  
**E-PLOT, AUTO PLOT MENU:** Electronic plotting and auto plotting (optional) menus.  
**NAV MENU:** NAV parameters.  
**CANCEL:** Hit once to cease plotting of a specific target. Press for 3 seconds to terminate all tracked targets.

**ORIGIN MARK:** Reference point for range/bearing measurement.  
**VECTOR TRUE/REL:** Selects true or relative vectors.  
**VECTOR TIME:** Sets vector length in time.  
**MARK:** Waypoint settings.  
**CHART ALIGN:** Offsets the electronic chart (option).  
**VIDEO PLOT:** For video plotter (option).  
**OTHER KEYS:** Used for ARPA.