

# RUGGED.

DOCKING STATIONS AND VEHICLE MOUNTS



**NEW**

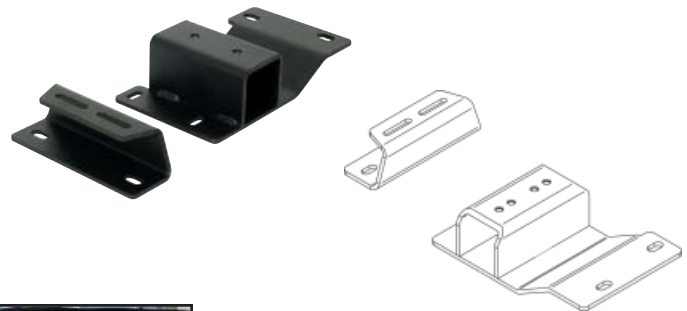
## MCS Vehicle Leg Kit: Dodge Charger (2006-2008) Dodge Magnum (2006-2008)

Placement	Seat Configuration	Drilling Required	Weight
On both sides of transmission hump	Bucket	<b>No</b> - attaches to existing factory mounting holes/studs (must take out factory top plate provided by Chrysler)	4.6 lbs

### Features

- Heavy gauge steel construction for long-term durability
- Black powdercoat finish for maximum corrosion resistance
- Legs attach to both short and long *MCS Top Plates* (Item No. 7160-0085 or 7160-0086)

**Item No. 7160-0088**



3001 Borham Ave  
Stevens Point, WI 54481  
Phone: 800-456-6868  
Fax: 715-344-8845

Email: [gamberj@gamberjohnson.com](mailto:gamberj@gamberjohnson.com)  
Website: [www.gamberjohnson.com](http://www.gamberjohnson.com)