

# RUGGED.

DOCKING STATIONS AND VEHICLE MOUNTS



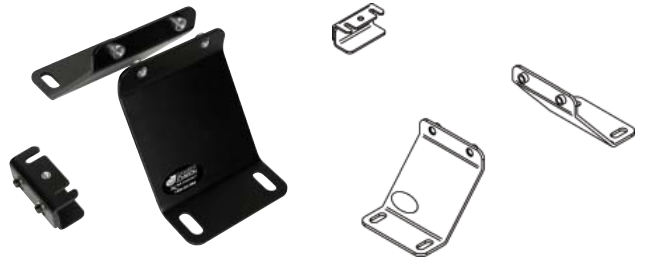
## MCS Vehicle Leg Kit: Ford Crown Victoria/Police Interceptor (1991-2008)

Placement	Seat Configuration	Drilling Required	Weight
On both sides of transmission hump	Bucket	No - attaches to seat studs	5.0 lbs

### Features

- Heavy gauge steel construction for long-term durability
- Black powdercoat finish for maximum corrosion resistance
- Legs attach to both short and long *MCS Top Plates* (Item No. 7160-0086 or 7160-0085)
- Newly designed leveling rear leg provides increased stability
- Can be used in combination with the *Ford Crown Victoria Vehicle Base* (Item No. DS-59)

**Item No.** 7160-0117



Very Well Connected™

3001 Borham Ave  
Stevens Point, WI 54481  
Phone: 800-456-6868  
Fax: 715-344-8845

Email: [gamberj@gamberjohnson.com](mailto:gamberj@gamberjohnson.com)  
Website: [www.gamberjohnson.com](http://www.gamberjohnson.com)