

INSTALLATION INSTRUCTIONS

Product

7160-0245

Vehicle Base, Ford Transit Connect

Revision

Rev A

Form

INST-473



WARNING



- You must read and follow all of these installation instructions. Failure to follow the installation instructions may result in serious bodily injury or death.
- Do not install or use the 7160-0245 Assembly in the area in which the airbag on the vehicle may be deployed. The installer and user of the 7160-0245 Assembly are responsible for installing and using the 7160-0245 Assembly outside the area in which an airbag may be deployed. (See Product Mounting Disclaimer Below)
- Keep these installation instructions with the product and readily available in the vehicle for future reference of other users of the product.
- Additional copies of the installation instructions can be obtained from Gamber-Johnson. If you need assistance or have any questions, call Gamber-Johnson at 1-800-456-6868.
- Do not remove warning label from product under any circumstances.

Tools Needed:

- T50 Torx Bit
- 7/16 Socket Wrench w/long extension

Installation

1. Loosen outboard passenger's seat bolt using a T50 Torx Bit.
2. Remove inboard passenger's seat bolt using a T50 Torx Bit.
3. Lift seat enough to slide the base into position.
4. Position Stabilizing Bracket and insert (2x) 1/4-20 Hex Head Bolts fastening them loosely with a 7/16 Socket Wrench. Take advantage of the cut-out on the base to align the inboard 1/4-20 Bolt (see FIG. 2).

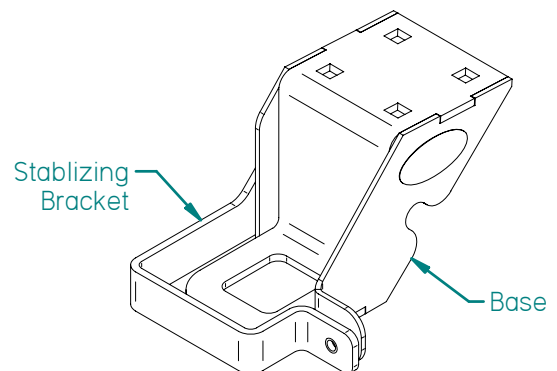


FIG. 1
Isometric Top View

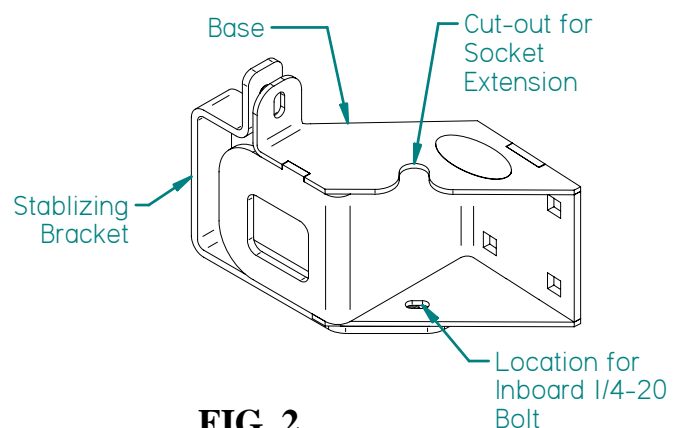


FIG. 2
Isometric Bottom View

Product Mounting Disclaimer

Gamber-Johnson is not liable under any theory of contract or tort law for any loss, damage, personal injury, special, incidental or consequential damages for personal injury or other damage of any nature arising directly or indirectly as a result of the improper installation or use of its products in vehicle or any other application. In order to safely install and use Gamber-Johnson products full consideration of vehicle occupants, vehicle systems (i.e., the location of fuel lines, brakes lines, electrical, drive train or other systems), air-bags and other safety equipment is required. Gamber-Johnson specifically disclaims any responsibility for the improper use or installation of its products not consistent with the original vehicle manufacturers specifications and recommendations, Gamber-Johnson product instruction sheets, or workmanship standards as endorsed through the Gamber-Johnson Certified Installer Program.

If you need assistance or have questions, call Gamber-Johnson at 1-800-456-6868

5. Using the T50 Torx Bit, fasten the base/seat assembly using seat bolt removed in **step 2**.
6. Again with the T50 Torx Bit, tighten in inboard and outboard seat bolts.
7. Using the 7/16 Socket Wrench tighten 1/4-20 bolts installed in **step 4** to complete the installation.

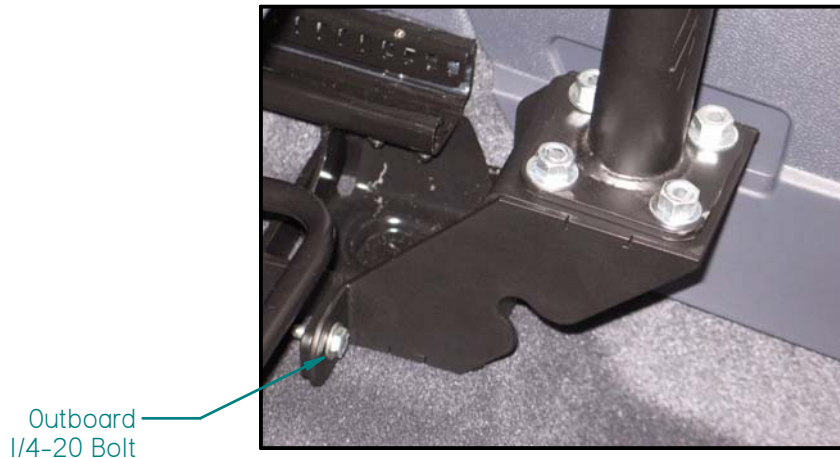


FIG. 3
Ford Transit Connect Vehicle Base,
Completed Installation



- The 7160-0245 Assembly should not be positioned in the area where the airbag may be deployed.

- DO NOT position the equipment in front of an airbag. Equipment positioned in front of an airbag may cause serious injury or death if an airbag is activated.
- If installation of the equipment requires that the equipment be placed in front of an airbag, the airbag should be deactivated. In order to secure permission for deactivating the airbag you must contact the National Highway Traffic Safety Administration at 1-800-424-9393 to gain permission to do so. If you have any questions or need assistance, call Gamber-Johnson at 1-800-456-6868.
- High speed vehicle turns may cause parts of the assembly to swivel, interfering with the driver or other equipment.