

DEFINING RUGGED

EXCEPTIONAL ENGINEERING | ROCK SOLID | EXTENSIVE TESTING



FORD F-250 TO F-750 SUPER DUTY (2011-2015)

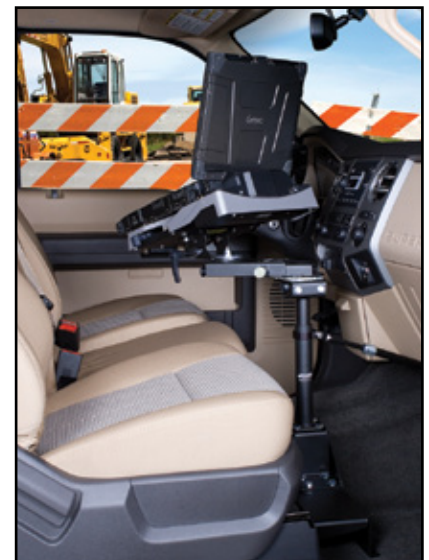
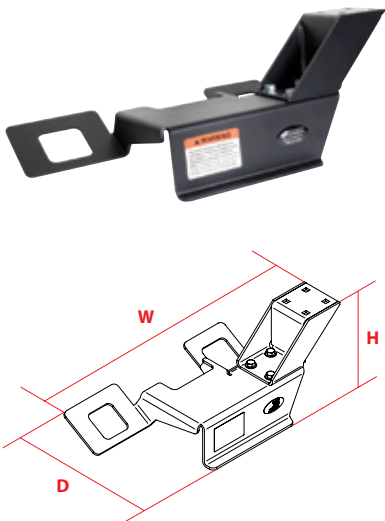
Placement	Seat Configurations	Drilling Required	Pole	Weight	Height	Width	Depth
Passenger side on the floor - under seat	Bucket/Bench	No - attaches seat studs: <i>Ford F-250 to Ford F-750 Super Duty (2011-2015)</i>	Lower Tube: DS-LOWER-9 Upper Pole: 7160-0178 Support Brace: 7160-0230 Motion Attachment: 7160-0220 Pole ordered separately	9.5 lbs	7.5"	19.5"	9.5"

Features:

- Heavy gauge steel construction for long-term durability
- Black powdercoat finish for maximum corrosion resistance
- Won't interfere with levers or factory-installed consoles located on transmission hump
- Won't interfere with passenger leg space
- One *Offset Universal Mounting Step* (Item No. DS-STEP) is already included with this vehicle base. However, additional *Offset Universal Mounting Steps* can be ordered to stack on top of each other if needed.
- For extra stability a *Support Brace* (Item No. 7160-0230) is recommended

Note: - In some cases of a bench seat, the seat bolt that the vehicle base mounts to on the inboard seat bolt the installer might need to tap threads into the hole under the mat.
- Vehicle Base will work with 4x4 floor shifter.

Item No. 7160-0281



3001 Borham Ave. | Stevens Point, WI 54481, USA
Phone: 715.344.3482 | Toll-free: 800.487.9220 | Fax: 715.344.5209
Email: gamberj@gamberjohnson.com | Website: www.gamberjohnson.com

Follow us on: