

# DEFINING RUGGED

EXCEPTIONAL ENGINEERING | ROCK SOLID | EXTENSIVE TESTING

## LOCKING SWING ARM

Placement	Motion Attachment Included	Tilt	Rotates	Weight	Height	Width	Depth
Any <i>Upper Tube, Complete Pole, Low Profile Brackets, Center Pole</i> or directly to any flat surface	Yes	Yes - up to 90° fore/30° aft	Motion Attachment - 360° Entire arm - 360° can lock at every 15°	5.60 lbs	3.74"	5.0"	14.46"

### Features:

- The entire arm can rotate around 360° with locking points at every 15°
- To rotate the arm simply pull the front lever out, rotate to desired position and then release the lever
- Ideal for work trucks and vans
- Motion Attachment:
  - Tilt capabilities:
    - 90° forward allows for tablets to be easily mounted
    - 30° aft movement with a positive stop at 30°
    - Riveted design allows for smoother tilt movement
  - Rotation capabilities:
    - Motion Attachment can rotate 360° allowing for maximum flexibility in computer placement
  - Easier installation:
    - Open throat design for ease of mounting to docking stations and cradles
- Can be mounted directly to a flat surface or on any *Upper Tube, Complete Pole, Center Pole* or *Low Profile Bracket*
- Heavy gauge steel construction for long-term durability
- Black powdercoat finish for maximum corrosion resistance

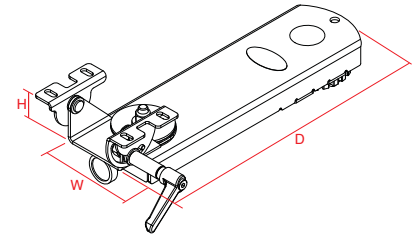
Item No. **7160-0341**



Tilt Shown: 30° aft



Tilt Shown: 90° fore



3001 Borham Ave. | Stevens Point, WI 54481, USA  
 Phone: 715.344-3482 | Toll-free: 800.487-9220 | Fax: 715.344-5209  
 Email: [gamberj@gamberjohnson.com](mailto:gamberj@gamberjohnson.com) | Website: [www.gamberjohnson.com](http://www.gamberjohnson.com)

This document, including images, may not be reproduced partly or fully without the expressed written consent of Gamber-Johnson's Marketing Department. © Copyright 2012 Gamber-Johnson LLC