

DEFINING RUGGED

EXCEPTIONAL ENGINEERING | ROCK SOLID | EXTENSIVE TESTING



FORKLIFT MOUNT: 0-90 CLEVIS WITH LARGE PLATE

Placement	Tilt	Swivel	Weight	Height	Width	Depth
Attaches to rectangular overhead guard leg 2.5" to 5.0" wide	Yes - 0-90 Clevis up to 90° fore/30° aft Yes - Clam Shell up to 160°	Motion Attachment - 360° Entire arm - 360°	9.1 lbs.	8.1"	8.1"	9.7"

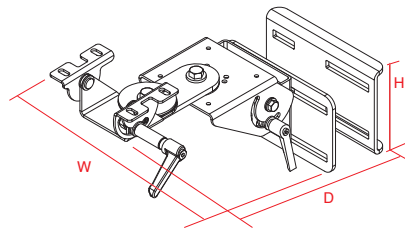
Forklift 0-90 Clevis Features:

- Heavy gauge steel construction for long-term durability in a rugged environment
- Black powdercoat finish for maximum corrosion resistance
- The entire arm can rotate around 360° and the Motion Attachment can also rotate 360°
- Arm extends 3" bringing equipment closer to the user
- Arm can be tightened down to be locked into a permanent position
- Tilt capabilities:
 - 90° forward allows for tablets to be easily mounted
 - 30° aft movement with a positive stop at 30°
 - Riveted design allows for smoother tilt movement
- Easier installation:
 - Open throat design for ease of mounting to docking stations and cradle
- Can be mounted directly to any *Clam Shell* (Item No. 7160-0357, 7160-0370, 7160-0371)

Large Plate Features:

- Heavy gauge steel construction for long-term durability in a rugged environment
- Black powdercoat finish for maximum corrosion resistance
- *Clam Shell* features the following hole patterns: AMPS, NEC and VESA 75mm
- The *Clam Shell* can be tilted up or down for a total of 160°
- To tilt the *Clam Shell* simply loosen the adjustable lever, tilt to desired position and then re-tighten the lever
- A secondary bolt is included to lock the clam shell into a permanent position
- Plate sandwiches the overhead guard leg and allows user to position the device at the desired height position

Item No. **7160-0365**



3001 Borham Ave. | Stevens Point, WI 54481, USA
 Phone: 715.344-3482 | Toll-free: 800.487-9220 | Fax: 715.344-5209
 Email: gamberj@gamberjohnson.com | Website: www.gamberjohnson.com

This document, including images, may not be reproduced partly or fully without the expressed written consent of Gamber-Johnson's Marketing Department. © Copyright 2013 Gamber-Johnson LLC