

RUGGED.

DOCKING STATIONS AND VEHICLE MOUNTS

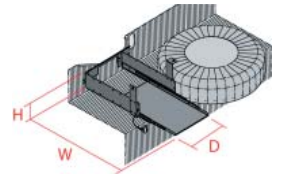


MCS Trunk Mounting Shelf - Ford Crown Victoria/Police Interceptor (1998-2008)

Placement	Drilling Required	No. of Shelves	Weight	Height	Width	Depth
Attaches to pre-drilled holes in trunk cavity	No	One	21.4 lbs	7.75"	24.0"	14.0"

Features

- Heavy gauge steel construction for long-term durability
- Black powdercoat finish for maximum corrosion resistance
- Mounting platform for radios, computers, modems and other equipment
- Extendable ball bearing slides for easy gliding
- Simple shelf removal for convenient equipment repair
- Safety snap pin with lanyard included



Item No. **MCS-1TMRS-CV**



3001 Borham Ave
Stevens Point, WI 54481
Phone: 800-456-6868
Fax: 715-344-8845

Email: gamberj@gamberjohnson.com
Website: www.gamberjohnson.com