

HDS Gen2 Touch FAQ

How is a G2T different than a regular Gen2?

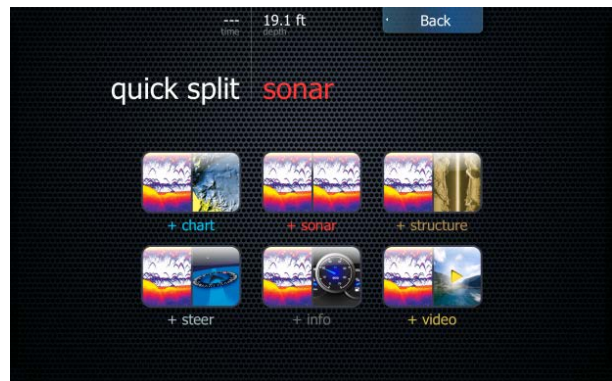
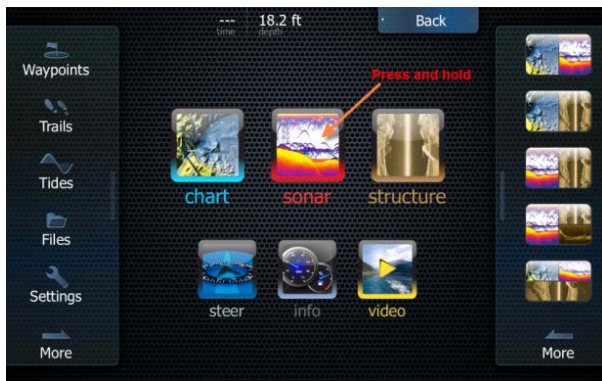
Other than the touch screen there are several differences between the HDS Gen2 and the HDS Gen2 Touch lines.

1. HDS Gen2 Touch features an incorporated StructureScan™ module in the head unit, eliminating the need to mount the box inside the boat.
2. The HDS 12 and 9 Gen2 Touch models have two Ethernet ports on the back, as well as supporting video in (with the use of an optional input cable)
3. HDS Gen2 Touch is capable of auto adjusting StructureScan™ contrast

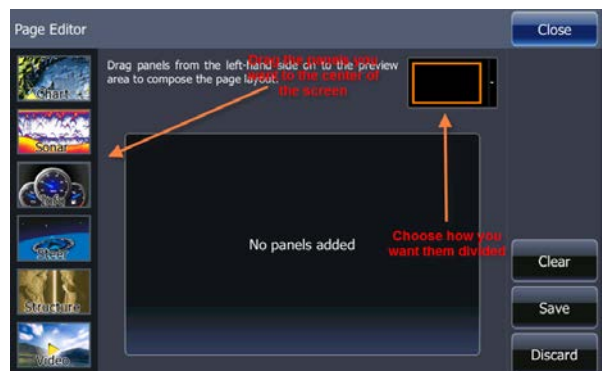
How do I access split screens?

Split screens can be done in one of two ways

1. Press and hold the icon you would like to split. You will then be provided with all possible half and half split combinations



2. User defined splits can be created

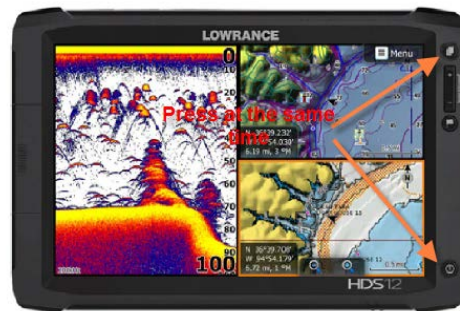


How often do we need to re-calibrate the screen? Are there certain conditions when this should be done?

The screen does not need to be calibrated often. However, should your screen need to be calibrated doing so is very simple. Just press and hold the waypoint key during the power on process. You will then be taken to a 9 point calibration screen.

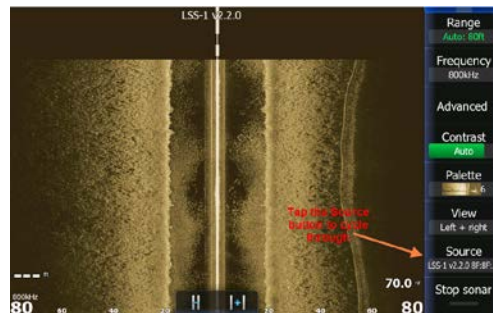
How do I take a screenshot?

Screenshots are easier in Gen2 Touch models than ever. In order to take one just press the power and pages keys at the same time. A screenshot will be saved to the HDS unit's hard drive.



How do I select different structure sources?

When multiple structure sources are detected a menu option will appear to change the Source. Simply tap this button to cycle through the choices.



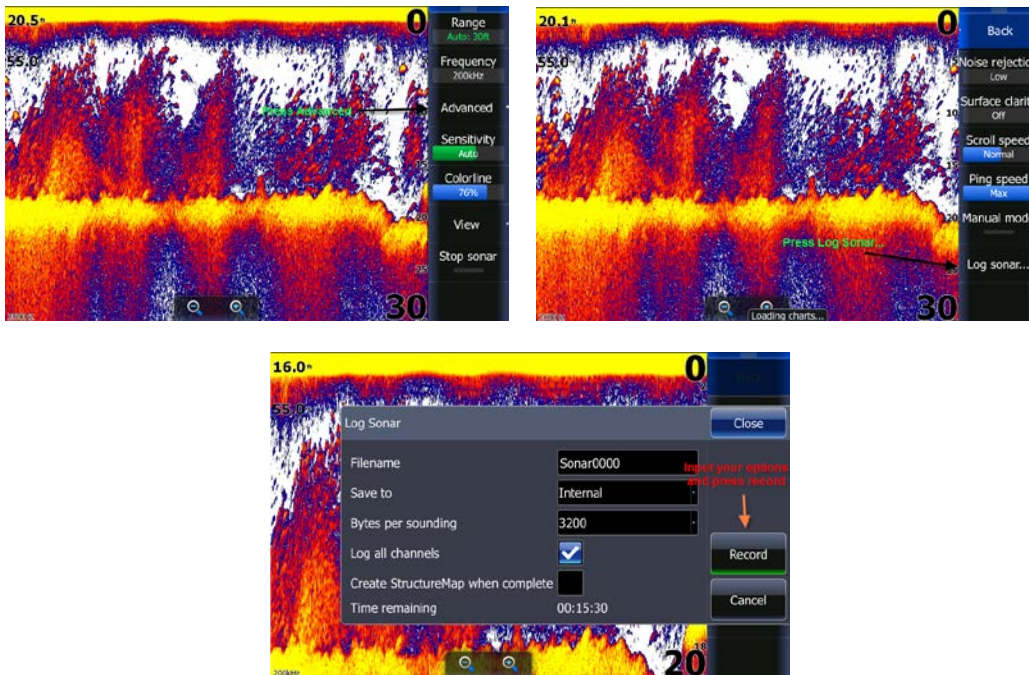
How do I clear the cursor?

Whenever the cursor is displayed the very first item in the right hand menu becomes Clear Cursor



How do I do sonar logs?

To create a sonar log simply switch to sonar view, press Advanced then press Log sonar... Once inside you will be presented with a menu where you can choose a file name, save location, and logging criteria



How do I input video on my HDS9 or HDS12?

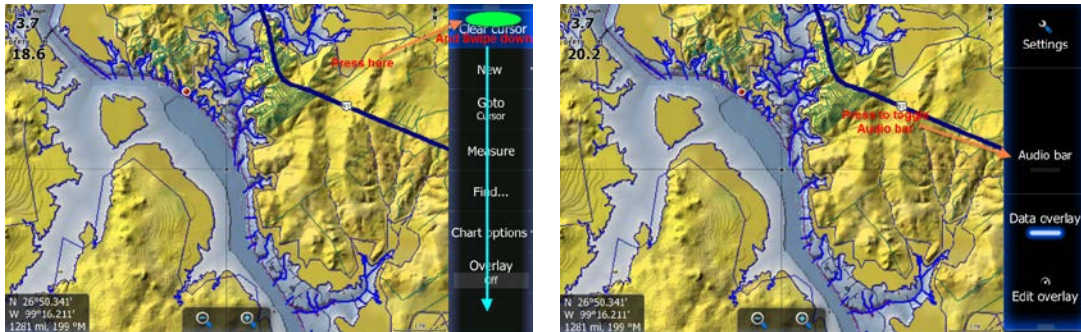
HDS 9 and 12 units can display video through the use of an optional adapter cable

How do I hide the menu?

To hide the user menu, just swipe it to the right.

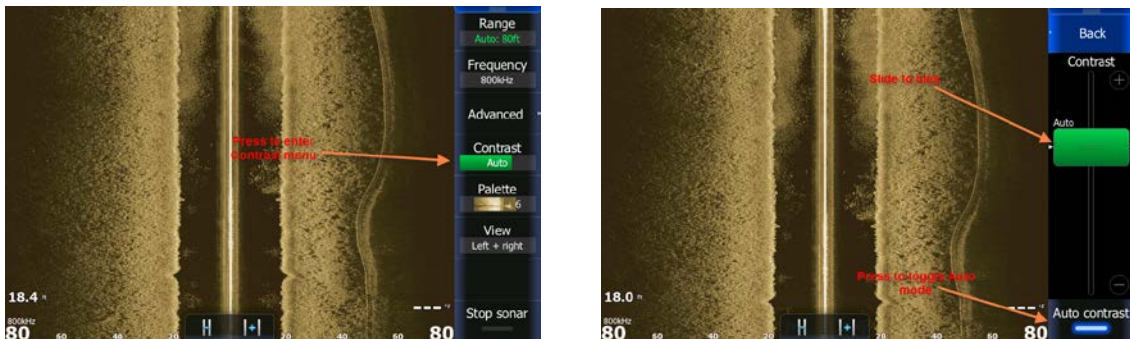
How do I turn on the Audio bar for SonicHub/ LWX-1?

The option for the Audio Bar can be found in the hidden system menu. To access, just swipe down on the top menu item for any page you are viewing. In the center you will find the option Audio bar.



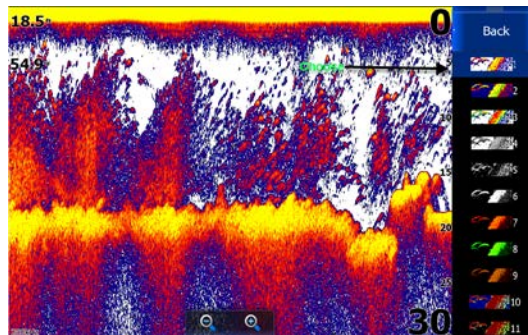
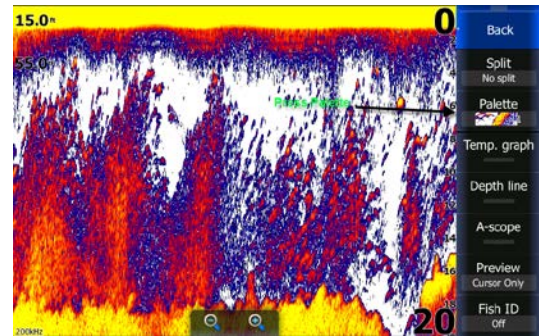
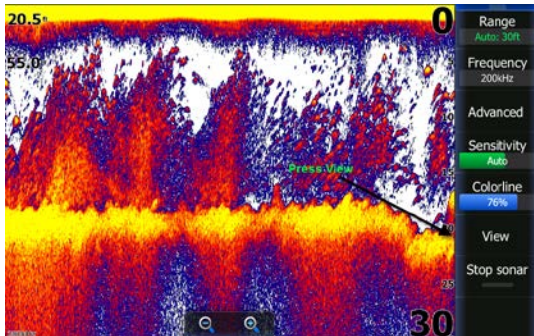
How do I adjust the StructureScan™ contrast?

On HDS Gen2 Touch StructureScan™ contrast is actually automatically adjusted. However, this auto mode can be biased up or down or turned off altogether. To adjust, switch to Structure mode and press the Contrast icon. Inside you will see the slider bar can be moved up or down or in this menu auto mode can be turned off.



How do I change the Sonar color palette?

While viewing the sonar page press View, inside you will see an option for Palette, press and choose the color palette you would like.



What is cursor assist mode?

While using Sonar, Structure, or GPS mode, press and hold your finger on the screen. You will notice the crosshair turns into a circle located just above your finger. This is Cursor Assist Mode. It allows you to see exactly where the cursor is and helps perfect placement.



How do I set up my overlays?

Overlay data can be edited from the Hidden System Menu. Simply switch to the page you would like to edit, and swipe down on the top menu item to access it. At the very bottom you will see Edit overlay. From this menu overlay data can be moved, changed, added, deleted, or configured. Just make sure to press Save when you are finished

