



*MW 800 MOBILE WORKSTATION  
THE MOST ADVANCED MOBILE DATA  
COMPUTER ON THE ROAD*

MW 800

## The MW 800:

MOTOROLA'S MOST ADVANCED  
MOBILE WORKSTATION

**High-resolution, glare-free,  
12.1" or 8.4" screen**



The MW 800 is one of Motorola's most advanced mobile data computers, loaded with high-speed processing power and high-level computing capabilities. Feature-rich, with all the easy functionality of a PC, its 3-piece design of separated CPU, display and keyboard allows for flexibility and ease of in-vehicle installation.

**Fully-sealed,  
removable keyboard**

### FEATURES:

*Ultra-ruggedized and versatile*

*Bright touchscreens have user-programmable buttons*

*Meets or exceeds MIL-STD 810F*

*Pentium-M or Celeron Processors*

*Runs dual applications simultaneously*

*Digital Video Recorder on board*

*Supports 2 displays + 2 applications from 1 CPU*

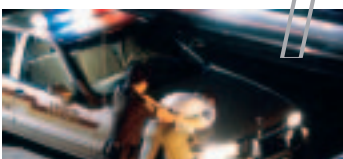
*Patented thermal management solution*

*Supports 4 wireless radios simultaneously*

*Works with Motorola and most 3rd party applications*

*Individual components can be purchased separately*

**Shock-mounted  
removable hard  
drive with heater**



# RUGGEDIZED

*Our full-featured road warrior  
is ultra-robust, super-powered,  
and ready for action*

# ROAD WARRIOR

*From fingerprints to  
mug shots or maps to  
Hazmat, the Mobile  
Workstation MW 800  
was designed and  
developed for the  
demands of your  
environment. It  
provides the mission-  
critical muscle you  
need to get the job  
done, wherever your  
mobile workforce  
goes.*



*Modularity and versatility in one system*

## *Go configure it*

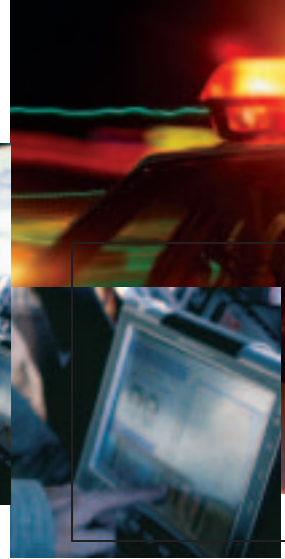
From keyboard to dashboard, the MW 800 offers exceptional flexibility, versatility and accessibility. The Airbag-friendly design avoids deployment obstruction.

Three components (high-resolution touch-screen, removable keyboard and high-powered CPU) make it easy to configure to any user preference. Plus, the 3-piece design offers flexible mounting in space-limited vehicles. The compact CPU fits anywhere – in the trunk, under the dash, under the seat, or wherever you choose.

### **MOTOROLA IS DRIVING INNOVATION FURTHER.**

With more than 75 years of technological innovations, 30 years of wireless data expertise, Motorola continues its successful legacy of rugged, high-performance, well-connected computers with the MW 800. Ideally suited for the public safety, homeland security, military, transportation, utility, distribution, courier and manufacturing markets, the MW 800 combines Motorola's vast experience in technical innovation and wireless data communications.

***See why the MW 800 is the ultra-robust, road-ready system that earns its battle pay every day.***



## Get choices, choices, choices

Because components are sold separately and are compatible with existing equipment, the MW 800 offers plenty of options. Select our CPU to work with a third-party display, or our displays and keyboard to work with your current laptop. The MW 800 meets PC industry standards and interacts with third-party hardware and applications. The high-powered CPU can support 2 displays running 2 independent applications simultaneously.

### **ACCESS DUAL APPLICATIONS FROM A SINGLE CPU**

Need to view a map in front while someone in the back enters a report? The MW 800 is so flexible, it lets users do double duty...viewing one application upfront while working on another in a different part of the vehicle.



# MISSION-CRITICAL



## **SUPPORTS DIFFERENT WIRELESS RADIOS. SEAMLESSLY AND SIMULTANEOUSLY**

Count on the MW 800 to increase productivity, dispatch and manage workers, evaluate performance, track and monitor status and automate procedures in real time. That's because it supports four different radios simultaneously: WLAN, GPS and PAN (Bluetooth), as well as one type of WWAN (Wireless Wide Area Network)

## **"TEST DRIVE" THE MW 800 FOR POWER AND PERFORMANCE**

From its shock-mounted removable hard drive that stands up to extreme conditions to a high-resolution touch-screen, readable in the brightest sunlight, the MW 800 was born to perform under pressure. Add the patented thermal management solution – to boot up quickly and dissipate heat rapidly – and you have a modular system that meets MIL-STD 810F standards.

## **TAKES ON THE TOUGHEST, ROUGH-AND-TUMBLE TASKS**

In today's mission-critical world, users insist on products that withstand shock, vibration, temperature extremes, and more. The MW 800 responds beautifully with brains and brawn. In fact, each component of this ruggedized system meets or exceeds MIL-STD 810F standards.









## **ANOTHER MOTOROLA FIRST: DIGITAL VIDEO RECORDER ON BOARD**

The MW 800 is the first rugged computer in the market to allow users to record video with their digital camera, and then download later to a server. So whether you want to capture a crime scene or catalog activity on-scene, Motorola has integrated this capability right into the unit.

## **ACCORDING TO CUSTOMERS, HERE'S WHAT REALLY MATTERS**

### **MOST IMPORTANT FEATURES**

### **PERCENT OF USER RESPONDENTS**

<i>Water/Dust Resistant (including keyboards)</i>		75.0%
<i>Ruggedness/Durability</i>		71.0%
<i>Shock/Vibration Resistant</i>		67.0%
<i>Reliable - Minimal Downtime</i>		60.0%
<i>Extreme Heat/Cold Resistant</i>		33.0%
<i>Daylight Readable Display</i>		33.0%
<i>Ease of Use</i>		20.0%
<i>Touchscreen/Pen Input</i>		8.0%

Source: The Global Market for Rugged Mobile Computers, Volume 1, Venture Development Corp., 2003.

*The MW 800 meets these needs*



**ACCESSORIES TO MAKE  
THE MOST OF THE MW 800**

DDN6871 USB Floppy Disk Drive  
DDN7541 DVD Combo Drive  
FAG5106 or FTN6709 WLAN Antenna  
FLN2957 External Microphone  
HSN4035 External Speaker  
FLN2955 USB to 4x RS232 Converter



The Commercial, Government and Industrial Solutions Sector (CGISS) of Motorola, Inc. has been named a recipient of the 2002 Malcolm Baldrige National Quality Award, the nation's premier award for performance excellence and quality achievement.



Motorola and the stylized M logo are registered in the U.S. Patent and Trademark Office. Specifications are subject to change without notice. All other product or service names are the property of their respective owners. ©Motorola, Inc. 2005

Motorola, Inc.  
1301 East Algonquin Road  
Schaumburg, IL 60196  
In the U.S., call: 1-888-567-7347  
Outside the U.S., call: 847-576-5000  
<http://www.motorola.com>