

# NEW a Series Multifunction Display

- Swipe, Touch and Navigate – very simple. Powered by Raymarine's intuitive LightHouse user interface
- Super Bright LED Technology – sunlight viewable optically-bonded display
- Super-fast dual core processor plus a powerful graphics processor
- Power save mode





## CHARTING

- 50 Channel internal GPS sensor
- Charts Included – a Series is supplied with ready-to-navigate Navionics Silver charts on a microSD card
- Step up to 3D and aerial photo chart navigation using Navionics Platinum+ charts on microSD. Also compatible with Navionics Gold charts
- Easy to use; with a simple start up wizard and on-screen user guide
- Powerful waypoint management tools. Search waypoints and favourite routes, and plan routes with a few simple touches

## AUDIO

- Control your audio
- Sync with your smartphone and control your MP3 music remotely using Bluetooth

## SONAR

- A powerful combo – the a67 combines all the navigation capabilities of the a65 with a built in ClearPulse® digital sonar
- Fully automatic ClearPulse digital sonar technology provides uncluttered, highly detailed display of fish and bottom structure
- Powerful 600 Watt digital sonar automatically adapts and adjusts sonar parameters for a clear image of fish and bottom down to 914m (3000ft).\*
- Dual Frequency – 200kHz for shallow water operation and 50kHz for offshore fishing
- Optional Ultra Wide FanBeam 200kHz transom transducer offers 3× the beam width of conventional 200kHz transducers
- Trolling motor ready – optional adapter enables use of Minn Kota's Universal Sonar trolling motor transducer (83kHz)

\* Actual depth performance may vary. Sea conditions, temperature and water salinity can affect the maximum depth range of the sonar

## NETWORKING

- Fast Raynet Ethernet (SeaTalk<sup>hs</sup> compatible) port for networking with up to 6 Raymarine MFDs
- Network support for Raymarine Digital radar and HD Color and SHD Color radar, ClearPulse® CHIRP sonar modules
- NMEA2000 and SeaTalk<sup>ng</sup> connectivity

## FUEL MANAGEMENT

- Advanced fuel monitoring with range, time-to-empty calculations and fuel range rings display overlaid on navigation charts
- Tank level indicators



Notes: Sonar module required for sonar functionality. Radar antenna required for radar functionality.

## Chart

Navionics Silver Cartography as standard



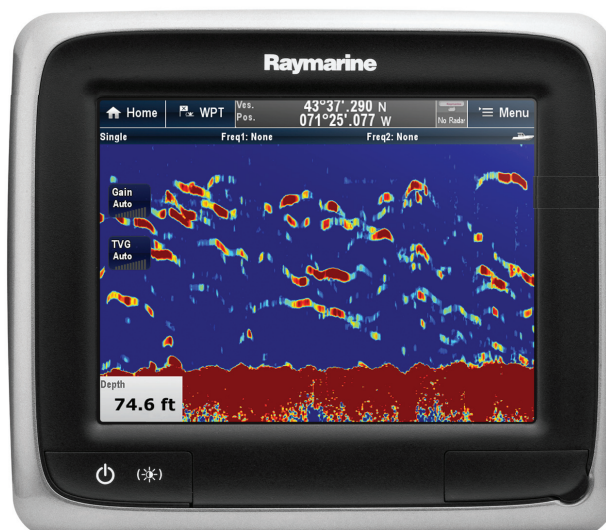
## Radar

Optional Digital, HD and SHD Digital Color Radar



## Sonar

ClearPulse sonar built-in on a67 module





# It's Extremely Well Connected



Actual size (subject to printing limitations)



## Networking

Network a65/a67 with e Series and c Series MFDs



## Fuel Management

Chartplotter mode with fuel range rings. Other fuel data includes Time to Empty, Fuel Economy...



## Audio

Control your audio



## IP Camera Support



## Accessories

1



2



3

256  
COLOR HD+SHD



4



5

Bluetooth



- 1 CP450C CHIRP Sonar module for the ultimate in fishfinder technology
- 2 AIS350/AIS650 Automatic Identification System (AIS) modules
- 3 Digital, HD or SHD Digital Color radar antennas
- 4 Autopilots
- 5 Optional Wireless Control. The RCU-3 wireless remote offers simple 3 button control of the MFD using Bluetooth. Wheelmount or lanyard (supplied).



Powerful, go-anywhere, touch screen a65 and a67;  
the speed and simplicity of Raymarine full-function  
navigation in a sleek 5.7" display.

**a65:** the perfect choice for chartplotting and  
networking

**a67:** the ClearPulse® digital sonar equipped a67 is the  
choice of serious anglers looking for a powerful GPS/  
Sonar combo with extensive add-on options



Split-screen chart and radar\*



Power save mode



Radar\* with on-screen controls

\* Radar antenna required for radar functionality



## a65/a67 SPECIFICATIONS

**Nominal voltage supply:** 13.8 v DC

**Operating voltage range:** 10.2 – 15.6 v DC

**Current consumption at full brightness:** a65/a67: 9/12W

**Current consumption in standby mode:** less than 100mW

**Operating Temperature range:** -10°C to +50°C (14°F to 122°F)

**Storage Temperature:** -15°C to +65°C (5°F to + 149°F)

**Waterproofing standard:** IPX6 and IPX7

**Display size:** 144.8mm (5.7")

**Display resolution:** 640 x 480 pixels (4:3 format)

**Colour depth:** 24 bit

**Viewing angles:** 70° left/right/top and 45° bottom

**Networking:** Up to 6 units

**Cartography:** Navionics Silver supplied

(upgradable to Navionics Gold or Platinum Plus)

**Connections:** 1 x SeaTalk<sup>®</sup> (Raynet); 1 x SeaTalk<sup>®</sup>g

**Dimensions (w) x (h):** 164mm x 144mm (5.67" x 6.45")

### ORDERING INFORMATION

**E70135** a65 Touchscreen MFD – supplied with Navionics Silver Cartography for USA

**E70136** a65 Touchscreen MFD – supplied with Navionics Silver Cartography for Europe

**E70137** a65 Touchscreen MFD – supplied with Navionics Silver Cartography for Rest of World

**E70138** a65 Touchscreen MFD – supplied with Navionics Silver USA Inland Cartography

**E70139** a65 Touchscreen MFD – supplied with Navionics Silver Cartography for Canada

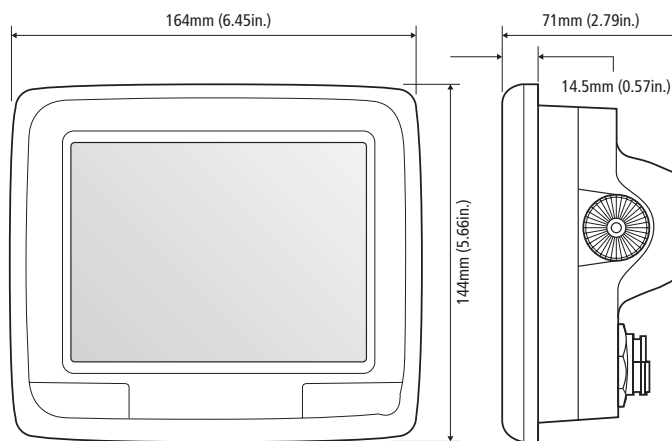
**E70140** a67 Touchscreen MFD with Built-In Sonar Module – supplied with Navionics Silver Cartography for USA

**E70141** a67 Touchscreen MFD with Built-In Sonar Module – supplied with Navionics Silver Cartography for Europe

**E70142** a67 Touchscreen MFD with Built-In Sonar Module – supplied with Navionics Silver Cartography for Rest of World

**E70143** a67 Touchscreen MFD with Built-In Sonar Module – supplied with Navionics Silver USA Inland Cartography

**E70144** a67 Touchscreen MFD with Built-In Sonar Module – supplied with Navionics Silver Cartography for Canada



### Safety Notice

Raymarine products are intended to be used as aids to navigation and must never be used in preference to sound navigational judgement. Their accuracy can be affected by many factors, including environmental conditions, equipment failure or defects, and incorrect installation, handling or use. Only official government charts and notices to mariners contain all the current information needed for safe navigation, and the captain is responsible for their prudent use. It is the user's responsibility to use official government charts, notices to mariners, caution and proper navigational skill when operating any Raymarine product.

### Content Note

The technical and graphical information contained in this brochure, to the best of our knowledge, was correct as it went to press. However, the Raymarine policy of continuous improvement and updating may change product specifications without prior notice. Therefore, unavoidable differences between the product and this brochure may occur from time to time, for which liability cannot be accepted by Raymarine.

Some images are for illustration purposes only.

### Specifications

All specifications are subject to change without prior notice. Visit [www.raymarine.com](http://www.raymarine.com) for the most up-to-date specifications. Some images are for illustration purposes only.

### Trademarks

For a list of trademarks, please refer to our website [www.raymarine.com](http://www.raymarine.com)

**Note.** Equipment described herein may require US Government authorisation for export purposes. Diversion contrary to US law is prohibited.

# 3

## FREE WARRANTY UPGRADE FROM 2 YEARS TO 3 YEARS

Raymarine offers a 2 year Limited Warranty (upgradable to 3 years upon product registration) on products installed in vessel use classifications within this brochure, full details of the Global Warranty Policy and how to register your products can be found at [www.raymarine.com/warranty](http://www.raymarine.com/warranty). If you require local assistance, please contact a Raymarine certified dealer near you, details of which can be found at [www.raymarine.com/dealerlocator](http://www.raymarine.com/dealerlocator).

**Raymarine UK Limited**  
Marine House  
Cartwright Drive  
Fareham  
Hampshire PO15 5RJ, UK.  
T: +44 (0)1329 246 700

**Raymarine Asia Pty Ltd**  
Suite 301  
2 Minna Close, Belrose  
New South Wales  
2085 Australia  
T: (+61) (0)2 9479 4800

**Raymarine Inc.**  
9 Townsend West  
Nashua  
NH 03063  
USA.  
T: 603.324.7900

**Raymarine België**  
(Order Processing)  
Luxemburgstraat 2  
2321 Meer  
Belgium  
T: (+32) 765 79 41 74

**Raymarine Danmark**  
Tigervej 12. 4600 Køge  
Danmark  
T: (+45) 4371 6464

**Raymarine Deutschland GmbH**  
Borsteler Chaussee 53  
22453 Hamburg  
Deutschland  
T: (+49) (0) 40 237 8080

**Raymarine France**  
Parc Activité des Peupliers  
37 Rue des Peupliers  
CS 50007  
92752 Nanterre Cedex - France  
T: (+33) (0) 146497230

**Raymarine Finland Oy**  
Suomalaistentie 1-3  
02270 Espoo  
Finland  
T: (+358) (0) 207619937

**Raymarine Italia**  
Via B. Quaranta, 57  
20139 Milano  
Italia  
T: (+39) (0)2 5695906

**Raymarine Nederland**  
Florijnweg 21G  
6883 JN Velp  
Nederland  
T: (+31) (0) 26 361 4242

**Raymarine Norge**  
Sognshøy Næringspark  
1580, Rygge,  
Norge  
T: (+47) 69 264 600

**Raymarine Sverige AB**  
Bolshedens Industriväg 18  
427 50 Billdal  
Sweden  
T: (+46) 317 633670



INNOVATION • QUALITY • TRUST

# Raymarine®

A FLIR COMPANY



# NEW a Series

Compact ▶ Full-Function ▶ Multifunction Displays



Preview

**Raymarine®**  
INNOVATION • QUALITY • TRUST



# NEW a Series Compact Dimensions Big Specifications

