

**SIMRAD**

New  
for 2013

# IS40 Instrument Display OP10 Autopilot Controller



Control Without Compromise

[SIMRAD-YACHTING.COM](http://SIMRAD-YACHTING.COM)

# Instrument & Autopilot Control

## No Compromise

Simrad autosteering products have been a core part of professional and leisure boat systems alike since 1951. For more than fifty years, the Simrad brand has and continues to represent reliable, functional and easy to use systems that are beautifully designed.

## Feature Packed Performance

The new IS40 Instrument Display and OP10 Autopilot Control range is easy to use, feature packed and offers Best in Class performance. The large and clear IS40 Instrument Display is the perfect partner for any motorboat or yacht and excels when combined with the intuitive OP10 Autopilot Controller. Easily installed and simply integrated with existing onboard electronics, you'll wonder why you ever took to the water without it.



IS40 Instrument Display



OP10 Autopilot Controller

## See what you want with the IS40 Instrument Display.

### ► **NEW** Large Multi Data Display

A tough, sunlight viewable screen, with clear digits and a display that's almost 40% larger than its rivals. Read wind speed, depth, boat speed, heading, autopilot status, engine data and much more.

### ► **NEW** Bonded LCD

Greater contrast for excellent readability with a massive 170° viewing angle. Zero condensation ensures a clearly visible screen in all seasons providing outstanding longevity and durability.

### ► **NEW** Full Colour

Enjoy an extremely clear, bright display with the latest LCD technology, day or night.

### ► Easy To Use

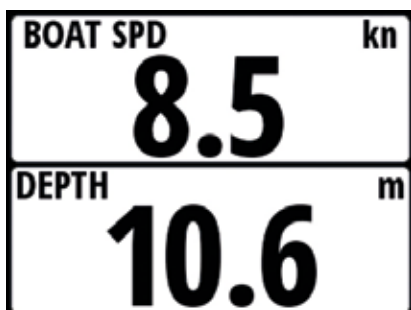
Large keys, a dedicated Page button and straight forward menus allow instant access to the data you require.

### ► Easy Installation

Micro-C connectors provide for quick and easy connection - ideal for retrofit or new build. Compatible with industry standards.

### ► Expandable

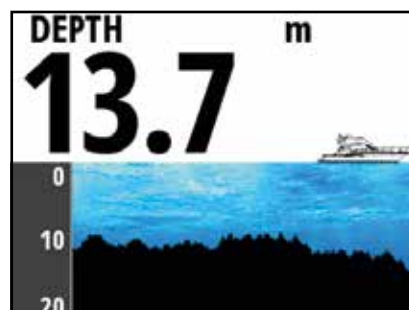
Choose a simple network and expand it to fit your requirements with full Simrad NSS and NSE chartplotter compatibility.



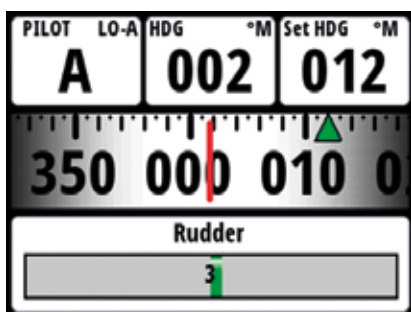
Speed / Depth



Engine Data



Depth Histogram



Autopilot



Wind



Pages Menu

## Take control with the OP10 Autopilot Controller.

### ► Full Compatibility

Perfect for retrofit or new build, the OP10 is fully compatible with any Simrad recreational autopilot that currently uses AP24, AP28, Simrad NSS, NSE or NSO for autopilot control. Volvo IPS drive compatibility ensures further levels of system integration.

### ► Total Control

Switch from manual steering to auto at the touch of a button, safe in the knowledge that you're in control.

### ► Easy to Use

Large buttons, LED backlit keypad and illuminated status bar ensure safe and reliable autopilot control, whatever the conditions.

### ► Easy Installation

Micro-C connectors provide for quick and easy daisy chain connection. Compatible with industry standards.



Your gateway to  
[Simrad-Yachting.com](http://Simrad-Yachting.com)  
Scan this code with your mobile.

## ► Technical Specifications

### IS40 Instrument Display

Power	
Power Supply	12V DC nominal (via network)
Power Consumption	Lights off: 50mA @ 12V DC Lights Max: 150mA @ 12V DC
Technical/Environmental	
Housing	ABS moulding
Waterproof Standard	IPx7
Width	118 mm \ 4.6 in
Height	115 mm \ 4.5 in
Depth (behind mounting plane)	20 mm \ 0.75 in (ex. cables)
Depth (visible)	17 mm \ 0.66 in
Operating Temperature	-15 to +55°C (+5°F to +131°F)

Display	
Display Resolution	320 x 240 (W x H)
Display Type	4.1" Colour bonded, Sunlight view
Display Modes	Many user configurable options, examples: <ul style="list-style-type: none"><li>• Single data</li><li>• Dual data</li><li>• Multi-function data (4-9 functions)</li><li>• Analogue Displays</li><li>• Steer screen</li><li>• Depth histogram</li></ul> With automatic display switching/cycling
Multilanguage Display	English, French, Spanish, German, Italian, Norwegian, Croatian, Swedish
Communications	
Network	Dual Micro-C, 1x F, 1x M

### OP10 Autopilot Controller

Power	
Power Supply	12V DC nominal (via network)
Power Consumption	<50mA @ 12V
Technical/Environmental	
Housing	ABS moulding
Waterproof Standard	IPx7
Width	60mm \ 2.3 in
Height	115 mm \ 4.5 in
Depth (behind mounting plane)	14 mm \ 0.55 in (ex. cable)
Depth (visible)	17 mm \ 0.66 in
Operating Temperature	-15 to +55°C (+5°F to +131°F)

Control	
Keys	Autopilot ON Autopilot Standby <10 10> <1 1> Mode change
Status Indicator	Red/Green Autopilot status indicator
Communications	
Network	Single Micro-C

# SIMRAD