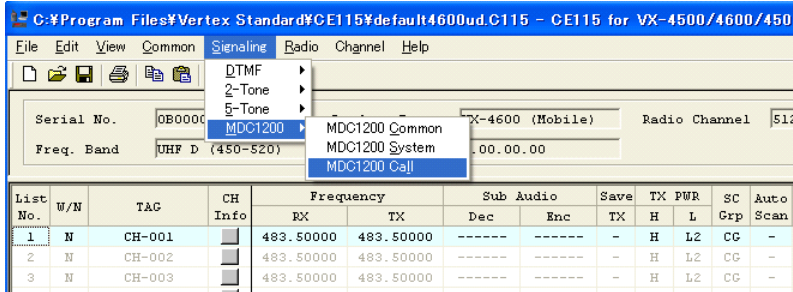


MDC1200 ARTS PROGRAMMING AND OPERATION

1. CE115 PROGRAMMING

1-1. User registration

- ☐ Select “Signaling” → “MDC-1200” → “MDC-1200 Call”.



- ☐ Program the all User ID in the “CALL ID” area.
- ☐ Name in the “TAG” that the each user can distinguish.
- ☐ Put the check mark, for the ID that are used, in the “ID Status” area.

Call No.	Call Type	Call ID	ID Status	TAG	ACK Exp	Ring Tone	System No.																		
							1	2	3	4	5	6	7	8	9	10	11	12	13	14					
1	Individual	0001	✓	USER01	-	A	-	-	-	-	-	-	-	-	-	-	-	-	-	-	-	-	-	-	-
2	Individual	0002	✓	USER02	-	A	-	-	-	-	-	-	-	-	-	-	-	-	-	-	-	-	-	-	-
3	Individual	0003	✓	USER03	-	A	-	-	-	-	-	-	-	-	-	-	-	-	-	-	-	-	-	-	-
4	Individual	0004	✓	USER04	-	A	-	-	-	-	-	-	-	-	-	-	-	-	-	-	-	-	-	-	-
5	Individual	0005	✓	USER05	-	A	-	-	-	-	-	-	-	-	-	-	-	-	-	-	-	-	-	-	-
6	Individual	0001	-	MDCID006	-	A	✓	-	-	-	-	-	-	-	-	-	-	-	-	-	-	-	-	-	-
7	Individual	0001	-	MDCID007	-	A	✓	-	-	-	-	-	-	-	-	-	-	-	-	-	-	-	-	-	-
8	Individual	0001	-	MDCID008	-	A	✓	-	-	-	-	-	-	-	-	-	-	-	-	-	-	-	-	-	-

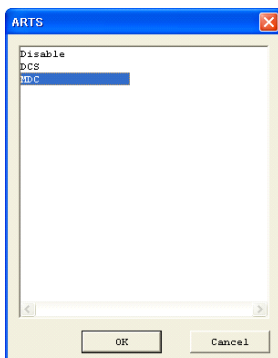
1-2. Set the MDC-1200 for using ARTS function

- ☐ Program from Channel setting to ARTS Type.

Note: The MDC 1200 Signaling and MDC1200 ARTS can not be used on the same channels.

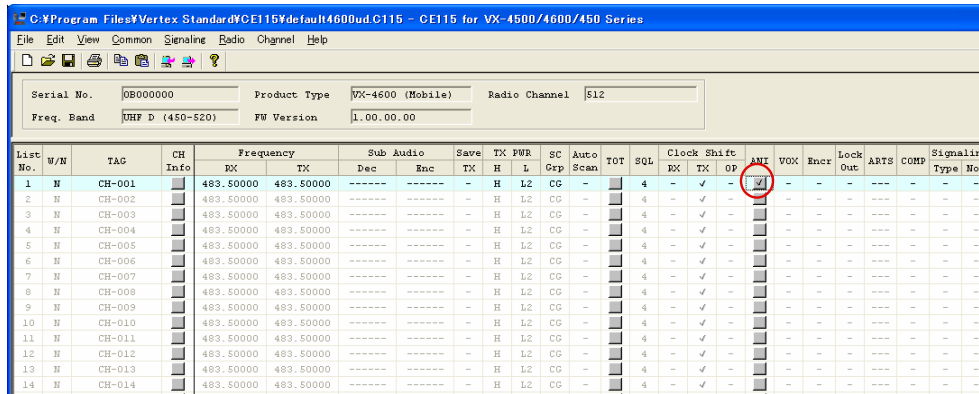
The screenshot shows a table with columns for List No., W/N, TAG, CH, Frequency, Sub Audio, Save, TX PWR, SC, Auto, TOT, SOL, Clock Shift, ANI, WOX, Encr, Lock Out, ARTS, COMB, and Signaling Type No. A red circle highlights the 'ARTS' column for the first row.

- ☐ Select “ARTS” Type as “MDC”.

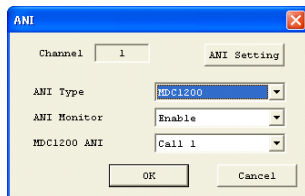


MDC1200 ARTS Programming and Operation

- ❑ Select Channel to “ANI”.

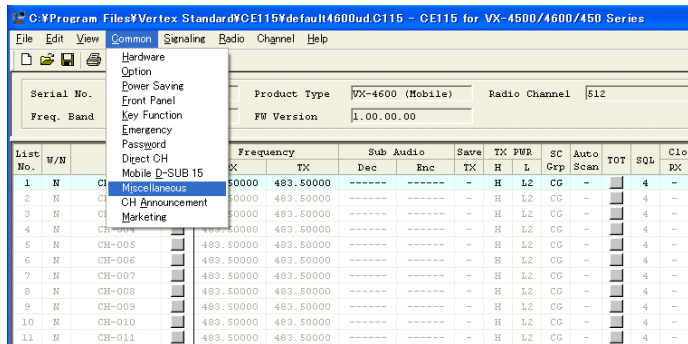


- ❑ Select “MDC1200” for “ANI Type”.
- ❑ Select “Enable” for “ANI Monitor”.
- ❑ Select “Call 1” for “MDC1200 ANI”.

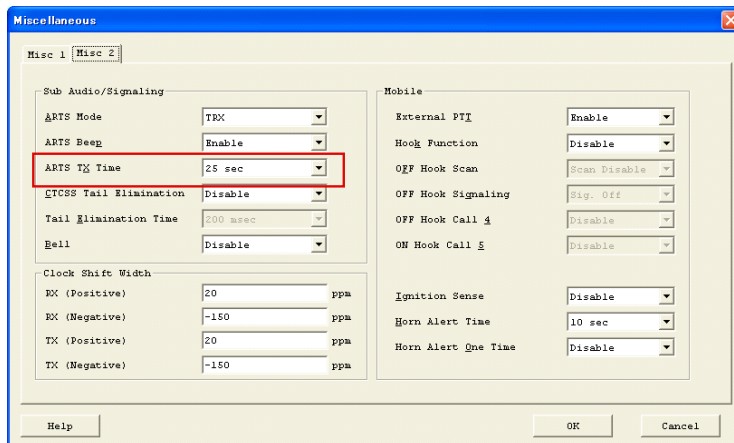


1-3. Program the checking period (interval timer) for the MDC1200 ARTS

- ❑ Select “Common” → “Miscellaneous”.

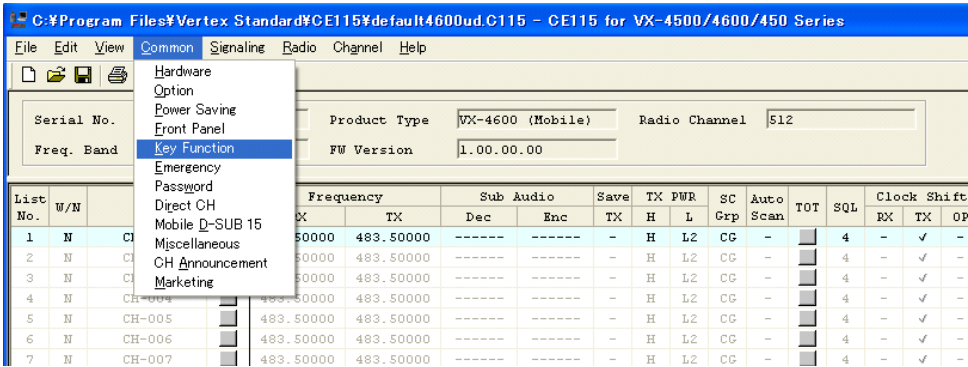


- ❑ Set “Misc 2”, then select “25 sec or 55 sec” for “ARTS TX Time”.

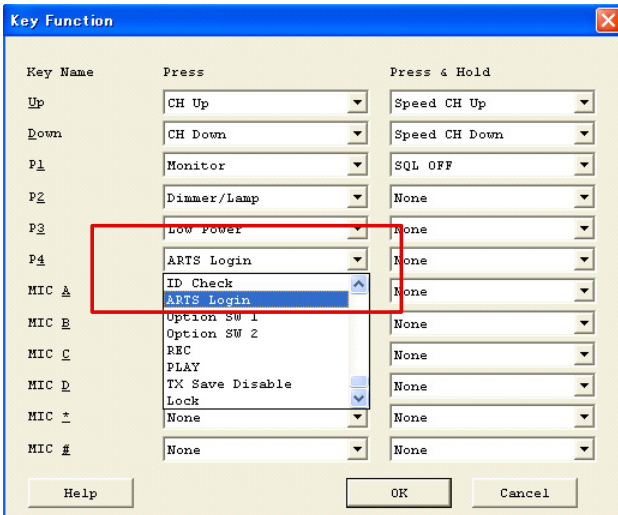


1-4. Program the MDC-1200 ARTS Login Check function key

- Select "Common" → "Key Function".



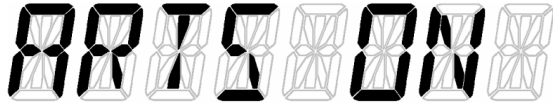
- Set the "ARTS Login" to the desired keys



2. HOW TO USE ARTS

2-1. Login / Logout Check

- Select the channel that the MDC1200 ARTS is programmed.
- The ARTS Mode starts automatically.

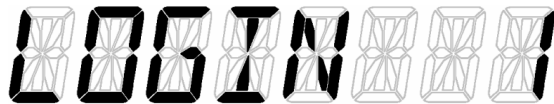


"ARTS ON" is displayed.

- When the other User is confirmed firstly, the TAG is displayed and the Login Beep sounds. When the station (ID) is not in the List, TAG is not displayed and the ID is shown on the LCD. When the ID is recognized for 2 minutes, a Logout Beep sounds and the Tag of the station who went out of range is displayed (for 1.5 sec).

2-2. Confirmation of the Login status

- Press the assigned Arts Login Key.
- During the "Arts Login check mode", the all DOTs at the lower part of the LCD light.
- Show the number of the current "Login" stations for 1.5 sec.



- When the number of "Login" is "0" (zero), terminate the Log in check and the Error Beep sounds.
- When the number of "Login" is not "0", show the Log-in User List.

3. ARTS Login Key operation

3-1. Portable

- [Side 1] / [A] Key: User List Up.
- [Side 2] / [B] Key: User List Down.
- [C] Key: ARTS Login Check mode ends.

3-2. Mobile

- [P1] / Mic [A] Key: User List Up.
- [P 2] / Mic [B] Key: User List Down.
- Mic [C] Key: ARTS Login Check mode ends.

Copyright 2011
VERTEX STANDARD CO., LTD.
All rights reserved

No portion of this manual
may be reproduced without
the permission of
VERTEX STANDARD CO., LTD.

