



Eventide®

NexLog™

Next Generation
Communications Logging Recorders

Mission-Critical Call Recording



P25 Radio • NG 9-1-1 • IP Dispatch • VoIP • Incident Management • Web-Based Replay
Quality Assurance • Reporting • Screen Capture • SIP • Digital • Analog • T1/E1 • LMR • RoIP • ATC

Eventide **NexLog** IP-based communications logging systems help you securely document and retrieve incidents, comply with regulations, and improve your facility's operations by reliably *capturing, storing, protecting, and managing* important interactions and critical data.

Public safety, government, institutional and industrial customers at thousands of sites worldwide trust Eventide mission-critical logging systems to reliably record and protect their most important interactions and related data.

The NexLog suite of products includes:

- **Communications Logging:** Linux-hardened recording platforms with multiple levels of redundancy.
- **Replay and Incident Management:** Intuitive search and replay tools that help you find and export recordings faster than ever before.
- **Instant Recall:** Desktop software to help call takers or dispatchers confirm what they heard or didn't quite hear.
- **Quality Factor:** Software to help you score call-handling performance and identify training needs.
- **Screen Capture:** Documents your agents' actions and skill levels when using call taking and dispatch tools.

SYSTEM FEATURES

- High-reliability network-ready logging system with embedded Linux OS and SQL database
- P25 trunked & conventional radio recording
- NG9-1-1 (i3) recording and logging support
- Call evaluation & reporting software
- Recording of desktop PC screen activity
- Up to 1 million hours of on-line audio storage
- Multi-tier security, auto-expiring passwords
- Full-time recording for compliance
- Records digital, VoIP, analog, T1/E1/ISDN, SIP
- Records NG9-1-1 via SIP-invite or SIPrec
- Records IP-dispatch consoles, RoIP systems
- Records trunked & conventional 2-way radio
- Captures DNIS, CLID from your switch
- 9-1-1 ANI/ALI and SMDR/CDR integrations
- Archive to DVD-RAM, HDD, or USB drives
- Network archive to multiple/redundant NAS
- Central archive to another **NexLog** recorder
- Live-monitoring of multiple channels
- Redundant power supplies and disk drives
- Web-based configuration manager software
- LCD color touch screen option for full control, incident replay, monitoring and configuration

ZETRON®

NexLog 740

Communications Logging Recorder

- 3U platform
- Redundant power
- Redundant HDDs
- 8 - 96 Analog channels
- 8 - 96 Digital PBX channels
- 24 - 192 T1/PRI channels
- 30 - 240 E1 channels
- 8 - 240 VoIP channels
- 8 - 240 NG9-1-1 SIP channels
- 8 - 240 P25 Radio channels
- (Shown with optional color LCD touch screen)



NexLog 840

Communications Logging Recorder

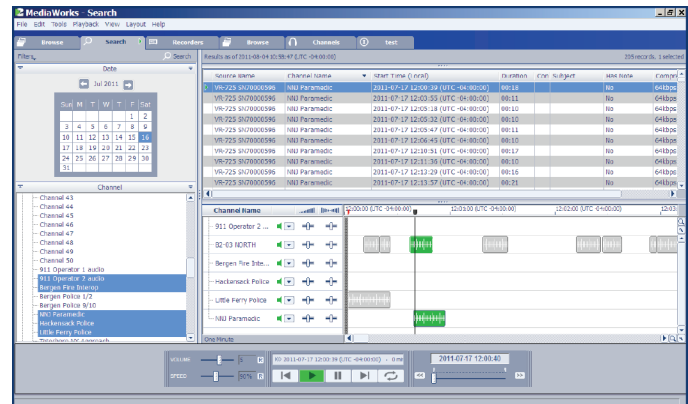
- 4U platform
- Redundant power
- Redundant HDDs
- 8 - 240 Analog channels
- 8 - 240 Digital PBX channels
- 24 - 240 T1/PRI channels
- 30 - 240 E1 channels
- 8 - 240 VoIP channels
- 8 - 240 NG9-1-1 SIP channels
- 8 - 240 P25 Radio channels
- (Shown with optional color LCD touch screen)



INCIDENT REPLAY AND MANAGEMENT

Eventide **MediaWorks™** browser-based or client software provides enhanced recording management capabilities including flexible search, multiple-call replay, graphical timeline with pan/zoom, variable-speed replay, drag & drop into incident tabs, redaction, protection, burn calls or incidents to CD, export or email incident, live monitor, and instant recall.

MediaAgent™ software provides agents, call takers, and dispatchers with preset-based instant recall, variable speed replay, record on demand, text annotation, and export to WAV.

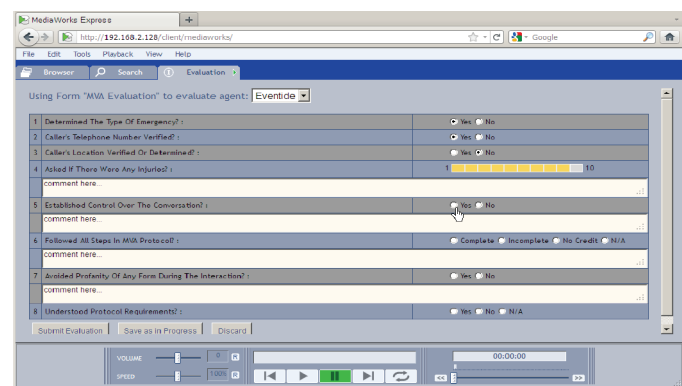


CALL EVALUATION & REPORTING

Eventide's **Quality Factor™** software option allows supervisors to efficiently evaluate call handling for key attributes such as fact finding, situational control, empathy and accuracy.

Evaluation questions and forms can be quickly adapted for special incidents, changing protocols, and new requirements.

Quality Factor reports help supervisors measure call handling quality and performance trends by individual, by group, or by entire center.



NEXT GENERATION 9-1-1

NG9-1-1 Recording

NexLog communications logging systems have been designed to comply with the NENA i3 standard for recording of NG9-1-1 primary interactions via “SIP-Invite” and SIPRec. The resulting recordings are immediately available for replay, instant recall, research, incident management, burn-to-CD, email, and export.

NG9-1-1 Logging

NexLog logging systems support a standards-based NG9-1-1 event logging web-service that allows other NG9-1-1 functional elements (sub-systems) to deposit and retrieve data such as call routing logs and geo-location. This web-service interface also permits other NG9-1-1 sub-systems or applications to retrieve an incident’s recorded media via RTSP.

SYSTEM RESILIENCE AND REDUNDANCY

NexLog communications loggers offer multiple levels of resilience, including redundant power supplies, redundant disk drives with choice of RAID level 1, 5, or 10, multiple archive redundancy choices, and geo-diverse network archiving.

NexLog loggers are available in fully- redundant pairs that provide parallel recording of mission-critical communications for 9-1-1, Dispatch, Air Traffic Control, and other applications.

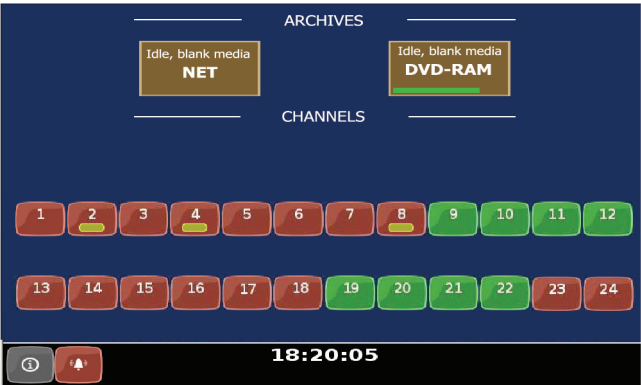


NEXLOG SCREEN RECORDING

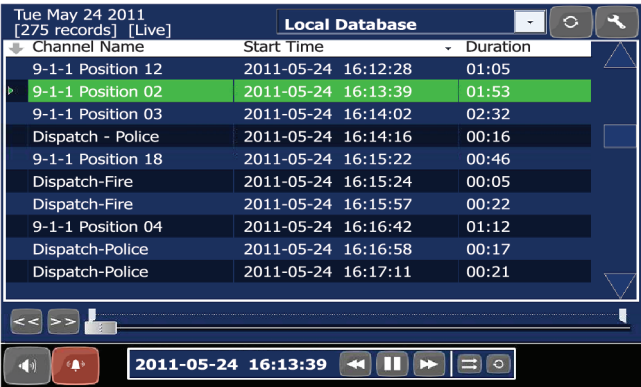
NexLog screen recording helps document the call-handling and dispatching actions that occur during an incident, by capturing the PC user’s screen activity. Screen recording also helps supervisors evaluate competency with important call taking and dispatching software. Desktop PCs with 1 to 4 screens are supported.

COLOR LCD TOUCH SCREEN OPTION

The available color touch screen provides convenient control and replay from the front panel. You can view channel status, archives and alerts, live monitor channels, and configure the system. Playback functions include search and replay, protect calls, create incidents, add calls to an incident, export, and burn to CD.



Info mode: Status of channels, archives and alerts; Live Monitor.



Replay mode: Search, playback, build incidents, export, burn to CD.

TECHNICAL SPECIFICATIONS - NexLog COMMUNICATIONS LOGGING RECORDERS

SYSTEM PLATFORM

- Non-proprietary turnkey recording and logging appliance
- Embedded Linux operating system ▪ Relational SQL database

HARDWARE BASE

- Industrial motherboard or System Host Board with Intel Core2 Quad CPU ▪ Industrial-grade rack-mount chassis

SECURITY

- User access by role and channels (or talk groups) ▪ Programmable password expiration ▪ User access and actions audited

LOCAL SYSTEM CONTROL

- Control via optional 7" color LCD touch screen on front panel
- Control via keyboard, display, and mouse

FRONT PANEL AUDIO CONTROLS

- Volume control ▪ Headset jack ▪ Line out (re-record) jack
- Built-in amplified speaker

CONFIGURATION UTILITY

- Web-based Configuration Manager software for complete system management

COMPRESSION (ANALOG/DIGITAL)

- 13kbs GSM ▪ 16kbs ADPCM ▪ 32kbs ADPCM ▪ 64kbs PCM

AUDIO CHARACTERISTICS

- Frequency response: 200 Hz to 3400 Hz ▪ Signal/Noise: >50dB
- Crosstalk: -60dB ▪ AGC: programmable

RECORD ACTIVATION

- VOX ▪ Off-hook ▪ Continuous ▪ Scheduled ▪ On-demand
- Optional contact closure detection

NETWORK

- Dual Ethernet 10/100/1000Mbps ▪ TCP/IP protocol ▪ Dual NIC binding supported ▪ SPAN capture on dedicated NIC

TIME SYNCHRONIZATION

- Network time protocol (NTP) ▪ RS-232 ▪ Optional IRIG-B card

ANALOG INTERFACE

- High-impedance (10kOhm) ▪ Beep tone ▪ Tip/Ring DCV detection
- Detects DTMF, MF, CLI, MDC1200 (optional)

DIGITAL PBX TELEPHONE INTERFACE

- Passive recording for a wide range of popular digital PBX telephones

T1/E1/ISDN INTERFACES

- High-impedance passive recording ▪ T1 ▪ T1/ISDN-PRI ▪ E1
- E1/ISDN30 ▪ ISDN2 trunks

VOIP RECORDING INTERFACE

- Passive recording via port mirroring of a wide range of VoIP PBX telephones and SIP trunks ▪ Cisco Built-in-bridge recording

IP DISPATCH AND ROIP INTERFACE

- Recording of unicast or multicast RTP audio ▪ IP-dispatch console systems ▪ RoIP interoperability systems

P25 SYSTEM INTERFACES

- Motorola ASTRO 25 recording via licensed AIS interface ▪ EF Johnson ATLAS 25 via privileged interface ▪ P25 phase 1 & 2

NEXT GENERATION 9-1-1 INTERFACE

- NG9-1-1 Primary Interaction recording via SIP-invite or SIPrec
- NG9-1-1 data logging web service

NexLog 740

CHANNEL CAPABILITIES

- VoIP phones: 8 - 240 ch.
- P25 radio: 8 - 240 ch.
- NG9-1-1 SIP: 8 - 240 ch.
- Digital 2-wire: 8 - 96 ch.
- T1/ PRI: 24 - 192 ch.
- Mitel Superset, ROLMphone, or Digital 4-wire: 4 - 48 ch.
- SIP trunks: 8 - 240 ch.
- IP dispatch: 8 - 240 ch.
- Analog 2-wire: 8 - 96 ch.
- ISDN-BRI: 4 - 48 trunks
- E1/ISDN30: 30 - 240 ch.

HARD DISK DRIVE ARRAY OPTIONS

- 1 TB RAID-1 [2 x 1 TB]
- 3 TB RAID-5 [4 x 1 TB]
- RAID 1+0 options
- 2 TB RAID-1 [2 x 2 TB]
- 6 TB RAID-5 [4 x 2 TB]
- SAN option via FC-interface

ARCHIVE OPTIONS

- Network archiving to NAS
- Central archive to another NexLog
- Single or dual DVD-RAM
- Archive to USB Flash
- USB HDD(s)
- Removable 500GB HDD

POWER SUPPLIES

- Dual hot-swap supplies
- 350 W
- 100-240 VAC, 50/60Hz

FORM FACTOR, PHYSICAL

- 3U, rack-mountable
- 5.25"H [134mm] x 19"W [482mm] x 24"D [610mm]
- 50 to 80 pounds (23 to 34 kg)

ENVIRONMENTAL REQUIREMENTS

- Temperature (operating): +5C (41F) to 40C (104F)
- Humidity (operating): 10-80%RH, non-condensing

NexLog 840

CHANNEL CAPABILITIES

- VoIP phones: 8 - 240 ch.
- P25 radio: 8 - 240 ch.
- NG9-1-1 SIP: 8 - 240 ch.
- Digital 2-wire: 8 - 240 ch.
- T1/ PRI: 24 - 240 ch.
- Mitel Superset, ROLMphone, or Digital 4-wire: 4 - 120 ch.
- SIP trunks: 8 - 240 ch.
- IP dispatch: 8 - 240 ch.
- Analog 2-wire: 8 - 240 ch.
- ISDN-BRI: 4 - 120 trunks
- E1/ISDN30: 30 - 240 ch.

HARD DISK DRIVE ARRAY OPTIONS

- 1 TB RAID-1 [2 x 1 TB]
- 3 TB RAID-5 [4 x 1 TB]
- RAID 1+0 options
- 2 TB RAID-1 [2 x 2 TB]
- 6 TB RAID-5 [4 x 2 TB]
- SAN option via FC-interface

ARCHIVE OPTIONS

- Network archiving to NAS
- Central archive to another NexLog
- Single or dual DVD-RAM
- Archive to USB Flash
- USB HDD(s)
- Removable 500GB HDD(s)

POWER SUPPLIES

- Dual hot-swap supplies
- 400 W
- 100-240 VAC, 50/60Hz

FORM FACTOR, PHYSICAL

- 4U, rack-mountable
- 7"H [178mm] x 19"W [482mm] x 26"D [661mm]
- 65 to 95 pounds (30 to 43.2 kg)

ENVIRONMENTAL REQUIREMENTS

- Temperature (operating): +5C (41F) to 40C (104F)
- Humidity (operating): 10-80%RH, non-condensing



ZETRON AMERICAS

PO Box 97004, Redmond, WA USA 98073-9704

(P) +1 425 820 6363 (F) +1 425 820 7031 (E) zetron@zetron.com

ZETRON EMEA

27-29 Campbell Court, Bramley, Hampshire RG26 5EG, United Kingdom

(P) +44 1256 880663 (F) +44 1256 880491 (E) uk@zetron.com

ZETRON AUSTRALASIA

PO Box 3045, Stafford Mail Centre, Stafford QLD 4053, Australia

(P) +61 7 3856 4888 (F) +61 7 3356 6877 (E) au@zetron.com

©Zetron, Inc. All rights reserved. Zetron® and Zetron and Design® are registered trademarks of Zetron, Inc. All other trademarks are properties of their respective owners.

See Zetron price list for option pricing. Specifications subject to change without notice.

www.zetron.com

Eventide®

© 2012 Eventide Inc. Specifications and features subject to change without notice. Check with Eventide for hybrid (mixed-type) channel capacities, and for pre-sales review of digital telephone, VoIP telephone, and VoIP codec compatibility.