

INTRODUCTION

Integrator RD radio dispatch application software executes under Microsoft Windows® XP Pro, or Windows® Vista. Integrator RD may be run concurrently with other well-behaved applications and minimized or cropped as necessary to support multiple windows on a single screen. Integrator RD is also fully supportive of touchscreen operation with an appropriate touchscreen monitor.

The radio dispatch application makes full use of Windows networking capabilities—configuration files defining the “personality” of the console may be stored on a central file server to minimize the workload associated with configuration management of a system. In the event that the server fails or is unavailable, the Integrator RD application loads a copy of the configuration file from its local hard drive. To ensure compatibility with the widest range of network protocols, Integrator RD maintains an open architecture. The system integrator or end-user may install network interface cards for any supported protocol.

FEATURE SUMMARY

- Supports up to 48 channels – any combination of radio, telephone, intercom, or PA
- Up to 36 Channel Resource Icons may be presented on one screen. Channel resources and critical controls are always visible and readily accessible.
- Six Screen Select Keys allow instant call-up of previously defined screens to suit operator preference or changing shift requirements
- Up to 16 operating positions – may be mixed with button consoles
- User interface supports mouse driven or touchscreen operation
- Available as a complete system (PC, Audio Panel, Windows® OS software, cables, etc.) without monitor, or as individual components less PC and monitor
- Call History Window with 20 character aliases
- Compatible with conventional (Tone, DC, E&M) and wireless applications (EDACS®, iDEN®, LTR®, NEXEDGE™, PassPort®, P25, SmartZone® and MPT 1327/MAP27)
- Supports networked configuration with centralized configuration file management
- Supports concurrent execution of other Windows® applications with radio dispatch console software
- Compatible with separately procured multiple monitor cards for multi-monitor usage
- DTMF, Zetron Alert, and Mot/GE Two-Tone Paging is Standard — MDC-1200, Quick Call I (2 + 2), Plectron, 5/6 Tone, Reach, Knox, and Rotary Dial formats optionally available
- “One-touch” paging operation uses named buttons instead of pager cap codes. Hierarchical menu structure allows pages to be logically grouped for easy access.
- MDC-1200® Full Features
- Login profiles enable or disable advanced features

INTEGRATOR RD MAIN SCREEN

Channel Resources

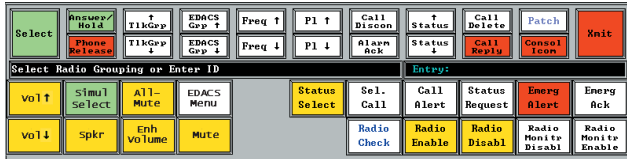


Clearly identifies channel name and presents call activity, transmit status, volume/mute settings and ANI aliases. Select a channel or perform an instant transmit with a single mouse click.

Accommodate up to 36 channel icons on a single screen.

System Controls

Intuitive control set is easily mastered by operators with minimal training. Includes all standard console functions.



StatusLine provides "real-time" help instructions on selected commands.



Single button controls allows operator to instantly boost highlighted channel volume to hear important calls.



Timed Mute mutes of all un-selected channels.

Clock and Transmit Indicator



The Zetron logo, displayed the upper-right corner of the screen turns red when the

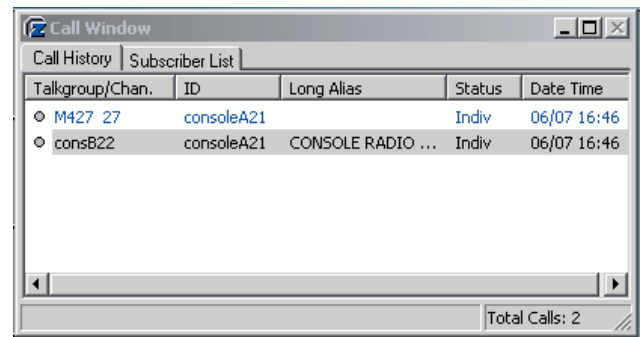
console position is transmitting. This is useful for showing observers as well as dispatchers the transmit status of their console position. Time display is synchronized between every position, and with an external master clock if so equipped.

Alarm Notification and System Messages



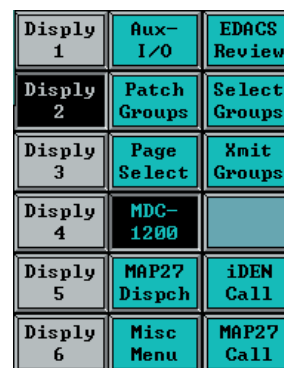
This allows any operator to know the health status of the console system.

Call History Window



When enabled, the call history window displays calls, call alerts and received status codes. Up to 64 calls are maintained in the queue.

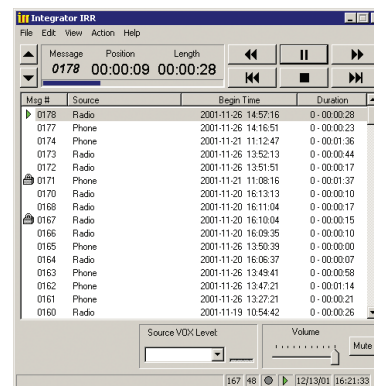
Sub-Menus



Select a sub-menu for paging, auxiliary I/O, miscellaneous controls, and group functions. Sub-menus do not affect channel resources or critical system functions.

Control lights, door locks, cameras, and alarms.

INSTANT RECALL RECORDER OPTION

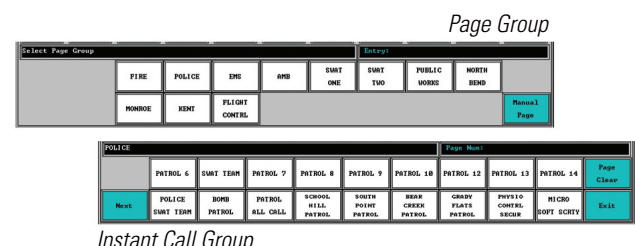


Recall recording is provided by Integrator IRR™ (Instant Recall Recorder), a powerful Windows voice recording application. Adds call recording/playback capability on two channels to radio dispatch and 9-1-1 dispatch systems. For more information, please contact Zetron

for a copy of the Integrator IRR specification sheet, or view it online at www.zetron.com.

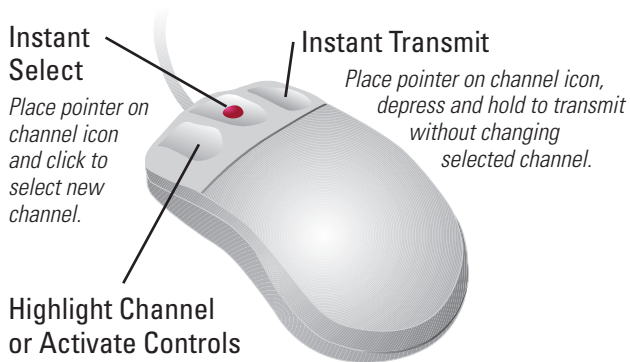
HIERARCHICAL PAGING

Selecting a page group brings up the Instant Call pages in that group.



Instant Call Group

THREE BUTTON MOUSE CONTROLS



Activate Note: Double-clicking the channel will select it.

MDC-1200 FEATURE HIGHLIGHTS

MDC-1200 signaling provides individual identification of every radio user. Transmission of this unique digital identification code occurs every time the MDC-1200 compatible radio is keyed. This feature allows the dispatcher to contact individual radio users, or groups of radio users. MDC-1200 also allows control of the system to silently test other radios in the field, disable any lost radio, and support individual or group paging.

PTT ID and Emergency Alert

Each radio can be programmed to send the ID code at the beginning of each transmission, at the end, or both. With radios capable of MDC-1200 alerting, an emergency button can be pressed to initiate the transmission of an emergency alarm signal. This signal takes precedence over any other signal on the console.

Call Alert and Selective Call Decode

Provides an efficient way to initiate a page or a voice page message to an individual or a group. When the user receives a Call Alert, the radio will continuously generate a series of four tones until the user takes action. When the user receives a Selective Call, the radio will generate alert tones and will un-mute so an incoming message can be heard.

Radio Check

Allows the console operator to determine if the radio unit is on the air (powered up) and within communications range without disturbing the radio user.

Radio Disable

Allows the console operator to selectively disable a radio in the field in case it falls into "the wrong hands" or is lost.

Radio Enable

Allows the console operator to selectively enable a radio in the field after it has been disabled.

Radio Monitor

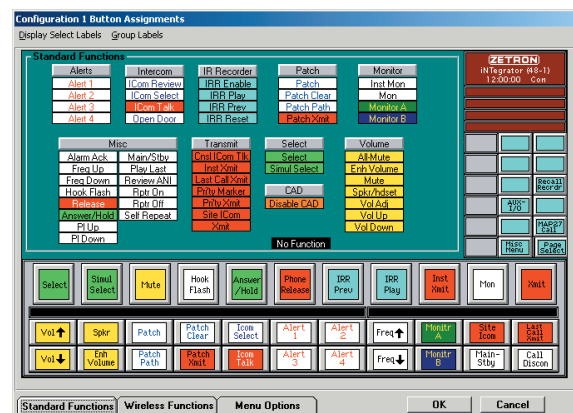
Allows the console operator to selectively enable a field radio's PTT function, so the operator can monitor the audio without the user's awareness.

Radio Monitor Disable

Allows the console operator to selectively disable a field radio's PTT function, after it has been enabled.

CONSOLE PROGRAMMING

The Integrator RD software may be quickly and easily reprogrammed in the field using RDPS (Radio Dispatch Programming System). RDPS provides a versatile Windows-based user interface for modifying the functionality of the workstation monitor and button controls, channel names, paging codes, ANI aliases, function tones and other useful parameters. After the new functions are programmed, the resultant configuration file is saved to disk on the individual host computers of each operating position, on a central configuration file server (if positions are networked), or both. During the set-up process, the Integrator RD software may be configured to look for its configuration file on the remote server. In the event that the server is inaccessible, the console software will revert to the local hard drive to locate the needed configuration files.



A partial list of programmable screen and button controls include:

- Transmit
- Last Call Transmit
- Group Instant Transmit (16)
- Priority Transmit (Supervisory Override)
- Monitor
- Site Intercom
- Alert (Steady Tone, Slow Siren, Fast Siren, Hi/Lo Warble, Beeps)
- All Mute (level and duration are user defined)
- Simultaneous Select
- Group Select (16)
- Patch Transmit
- Group Patches (16)
- ANI Review
- Priority Marker
- Headset/Speaker
- Page Enter
- Page Clear
- Page Safety
- Page Send
- Console Intercom Call
- Console Intercom Talk
- Console Takeover (supervisory only)
- EDACS Control Keys
- Frequency Up/Down
- Private Line Up/Down
- Instant Transmit
- Enhance Volume
- Volume Up/Down
- Patch
- Main/Standby (Base Station Control)
- Answer/Hold
- Phone Release
- Mute
- Hook-Flash
- Repeat On/Off
- Coded/Clear

- Self Repeat
- Monitor
- IRR Enable
- IRR Play
- IRR Reset
- IRR Prev
- IDEN Control Keys
- MAP27 Control Keys
- MDC 1200® Control Keys

SPECIFICATIONS

Operating System	Windows® XP Professional or Windows® Vista.
Multi-Tasking	Operation is warranted only when used with Zetron provided or Zetron authorized software applications
Hardware Platform	All hardware components must be listed on Microsoft's Windows® Compatible Hardware Products list. PCI slots required.
Processor	350 MHz or faster, Pentium® or equivalent
Data Storage	2 GB or more fixed disk drive, 3.5" floppy drive, 24x minimum CD-ROM drive
Memory	256 MB minimum for Windows® XP Pro (512 MB recommended), 3 GB minimum for Windows® Vista.
Display	1024 x 768 pixel (17" to 19") minimum. Dual monitors recommended for simultaneous operation with Integrator 9-1-1. Touch screen supported.
Video	4 MB video memory minimum
Audio	Sound card with speakers
Pointer	2 or 3 button PS/2 Mouse, or equivalent
Serial Ports	One free RS-232 port. Other Integrator applications may require additional ports.
Network	Required for advanced options TCP/IP Protocol

ZETRON USA

PO Box 97004
Redmond, WA
98073-9704
USA
TEL 425 820 6363
FAX 425 820 7031
zetron@zetron.com

ZETRON UK

27-29 Campbell Court
Bramley TADLEY
Basingstoke RG26 5EG
UK
TEL +44 (0)1256 880663
FAX +44 (0)1256 880491
uk@zetron.com

ZETRON AUSTRALASIA

PO Box 3045
Stafford Mail Centre
Stafford QLD 4053
Australia
TEL +61 7 3856 4888
FAX +61 7 3356 6877
au@zetron.com



© 2008 Zetron, Inc. All rights reserved. Zetron is a registered trademark of Zetron, Inc.

All trademarks are properties of their respective owners.